



TJ4200 GRAVITY CEILING AIR INLETS

Installation Instructions

CONTENTS

2 - Box Attic Sleeves
8 - TJ4200 Frame Assembly
8 - Zinc Counterweight Rods
2 - Insulation Boards

FRAMED OPENING

22.5" x 22.5"
(571.5 x 571.5 mm)

NOTE: Do NOT overtighten inlet to framed rough opening

TOOLS / MATERIALS REQUIRED

- Screw gun
 - Inlet mounting screws
 - Caulk for sealing inlet
- NOTE:** Screws not included

4" on Center Truss

1 - 2" x 6" - 10' long lumber per inlet

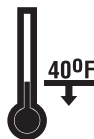
5" on Center Truss

1 - 2" x 6" - 12' long lumber per inlet

NOTE: To change the static pressure from .05 to .07, add 5/8" washer to each rod on inlet

MATERIALS HANDLING

Components are made of durable plastic. However, during very cold weather (below 40°F/4°C) material may become brittle and can crack or break when subjected to sharp blows or stress. Avoid striking or dropping components in cold weather. Assemble only at room temperature.



**DO NOT
ASSEMBLE!**

TROUBLESHOOTING - INLET NOT OPENING

- Too tight? Counterbalance needs to be checked for movement side to side. Make sure pivot pins are pushed in all the way.
- Counterbalance top edge stuck behind stop. Push bottom of counterbalance or pry top out. Check if weight is out of holders (replace into holder holes).
- Insulation or debris fallen into bottom of inlet - feel inside inlet bottom and remove dirt buildup.

INSTALLATION INSTRUCTIONS

U.S. PATENT NO. 6,475,078



TJ4200 arrives packed in its own attic sleeve! Do not damage the box, it will be used later in the installation process.



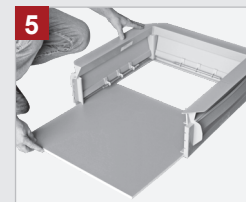
The shipping package contains two corrugated plastic attic sleeves, eight inlet sections, eight counterweight rods, and two insulation boards.



Insert counterweight rods into inlet rod retainer holes before snapping sides together. Put o-rings on the end of the rod.



The assembly of the TJ4200 is simple and requires no tools. Just snap together!



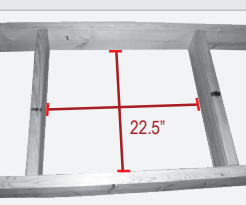
Begin by snapping three inlet sides together, then insert the insulation board in the bottom channel. Snap the fourth side into place to complete the TJ4200 inlet.



Separate the two boxes to be used for attic sleeves.



Add 2" x 6" to frame for inlet opening. One truss is used for inlet opening.



Finished framed opening of 22.5" x 22.5"



Install attic sleeve over outside of lumber framing the opening, with larger flaps of box down. May need to cut out part of box corner.



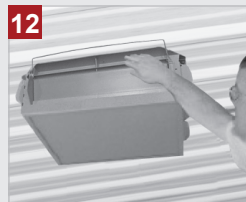
Be sure the insulation surrounds the wood frame.



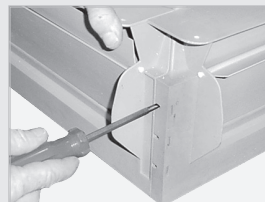
Inlet and frame will require caulking. Inspect and caulk gaps where the inlet meets the frame and where the frame meets the ceiling. (Bin caulk works well)



Center inlet over opening and screw into place. Be careful not to overtighten screws.



Push wire shut-off up. (Part 100745)



To disassemble the inlet to replace parts, press a screwdriver into the rounded slots. Inlet sides will unsnap.

Important: Check operation of all four counterbalances. They must swing freely without binding.

Note: Periodically clean louvers for dust buildup.

Double L Group, LLC will NOT be responsible for improperly installed inlets or for consequences of improperly installed inlets.

(563) 875-6257 or 1-800-553-4102

www.doublel.com

www.youtube.com/doublelgroup