

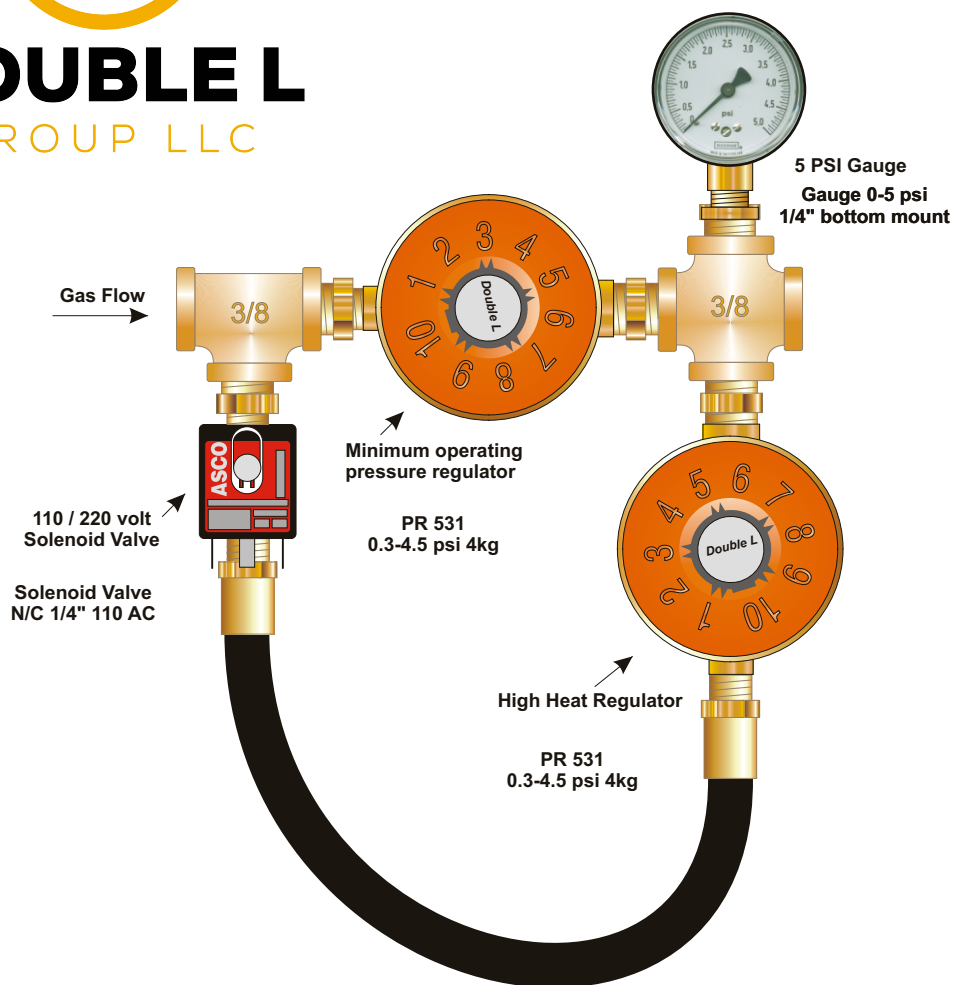


Double L Group
Part #29003



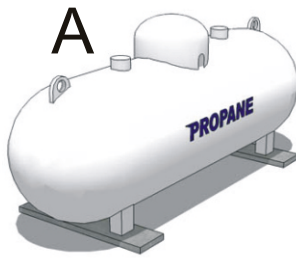
High/Low Gas Controller

Controls groups of heaters totaling (up to) 205,000 Btu's (LPG)



1. Source of gas

- A. LP tank
- B. LP Cylinders Battery
- C. Metered Natural Gas



or



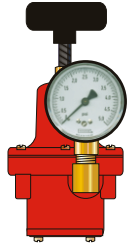
or



2. "First Stage Regulator"

Typically located at the tank, tank battery, or NG meter.

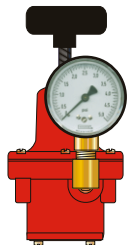
1st Stage Regulator
(at tank or battery)



3. "Second Stage Regulator"

located at the building

2nd Stage Regulator
(at Building)



4. Select the thermostat



Your central controller

or



TH-415 Thermostat

TH- 451Thermostat
Part # 50165

