



LAYER TIMES

Volume 25

Bringing you proven and tested
products since 1973

www.doublel.com

MEET OUR TEAM



Elizabeth Beeler
Vice President Sales
ebeeler@doublel.com



Nick Alt
Layer Sales Rep
nalt@doublel.com

Since 1973, Double L Group has committed to providing high-quality products and services worldwide that are based on value, customer needs, and excellent sales support. Our team of dedicated professionals are ready to help you choose the right products and answer any questions about installation. Contact us today!



INDEX

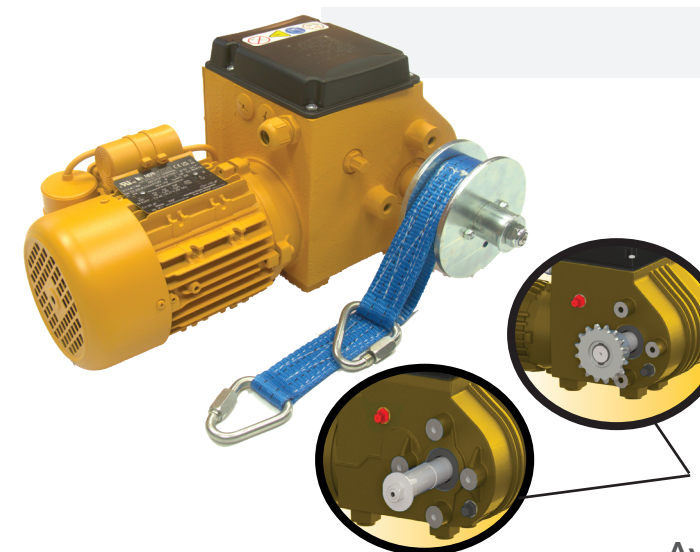
Meet Our Team	2
Winch Systems	3
Rack & Pinion.....	4-5
Exhaust Fans.....	6-7
Shutters.....	8-9
Circulation Fans.....	10
Wall Inlets.....	11-17
Wind/Sun Deflectors	18
Ceiling Inlets	19-24
Thermostats.....	25
Pop Door	26
Tunnel Door	27
Stir Fans	28-29
Evaporative Cooling.....	30-31
About Us.....	32



ECODRIVE WINCH SYSTEMS

Delivering Optimal Power for Ventilation Systems

- Flexible installation
- Multiple inlets can be controlled at the same time
- Low-maintenance and low-noise
- Perfect Price/Performance Ratio
- Compact and Smart Design
- Includes emergency limits



EcoDrive 300

Available in Belt Drive or Pipe Drive.
Contact for Part Number.

Torque	300 Nm
Belt Speed	28 in./min.
Pulls	1 Belt = 809 lbs/belt 2 Belts = 1050 lbs/belt or 2100 total
Voltage:	0.35 HP 120V 1 Phase 60hz 0.35 HP 240V 1 Phase 60hz 0.35 HP 240V 3 Phase 60hz 0.35 HP 480V 3 Phase 60hz

Available for Pipe or Belt
Drive Applications

EcoDrive 90

Part 17002

Torque	90 Nm
Belt Speed	6 in./min.
Pulls	1 Belt = 750 lbs/belt 2 Belts = 386 lbs/belt or 772 total
Voltage	24 DC




**NEW
PRODUCT**

ECOTIGHT ENDWALL RACK & PINION

The EcoTight EndWall Rack & Pinion system is designed to optimize tunnel ventilation systems. It is a closed cell insulated foam tunnel door with custom lengths and stacking available.



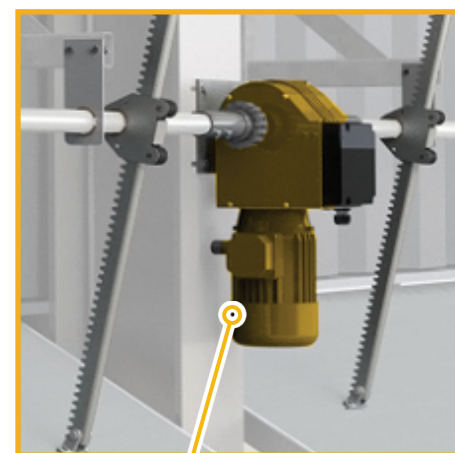
**Custom Sizes
Available. Contact
for Part Number**

Door Thickness: 1- 3/8"
Curved or Straight Rack
Color Options:

- White Paneling
- Grey Paneling

 Available Door Sizes of 24"-60"

- Actuates multiple rows with one winch
- Provides maximum sealing to reduce cold-air leakage
- Eliminates freezing issues
- Efficient design that minimizes the number of actuators
- Positive attachment to the tunnel doors
- Built to custom-sized vents to maximize intake openings
- Continuously hinged door
- Durably engineered with thick schedule 40 tubing
- Allows for smooth continuous control of vent systems
- Closed Cell foam filled with vertical and slanted supports providing rigidity

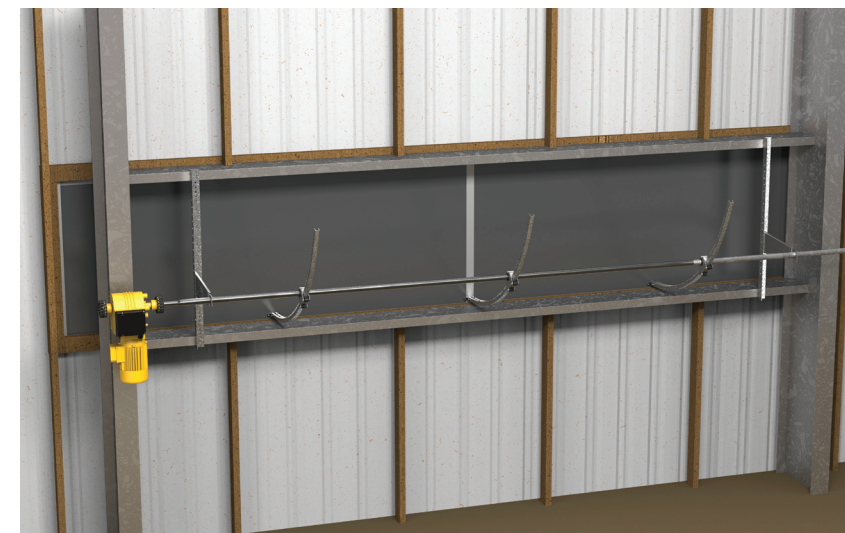


Heavy Duty
Actuating System


**NEW
PRODUCT**

ECOTIGHT SIDEWALL RACK & PINION

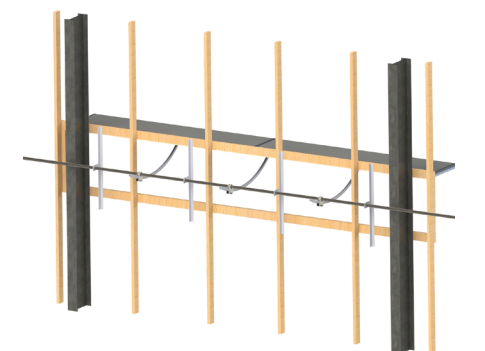
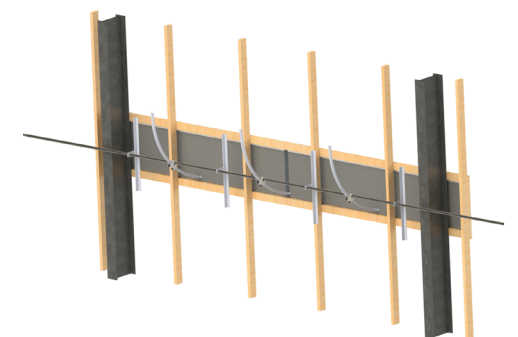
The EcoTight SideWall Rack & Pinion system is designed to optimize Cross Ventilation designed systems. It is a closed cell insulated foam, PVC tunnel door that is supported with galvanized tube steel parts. Custom lengths are available.



**Custom Sizes
Available. Contact for
Part Number**

Door Thickness: 1- 3/8"
Curved or Straight Rack
Color: Grey Paneling
Available Door Sizes of 24"-60"

- Efficient design that minimizes the number of actuators
- Positive attachment to the tunnel doors
- Built to custom sized vents to maximize intake openings
- Hi-profile gaskets for an optimum seal
- Eliminates freezing issues.
- Closed Cell foam filled with vertical and slanted supports providing rigidity
- Operated with a Heavy Duty Rack and Pinion System



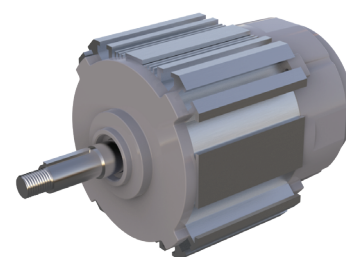
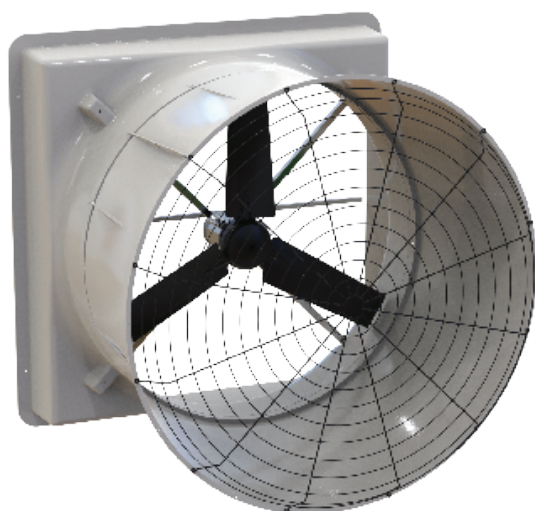


DIRECT X EXHAUST FAN

DRX24, DRX36, DRX48, DRX51, DRX57

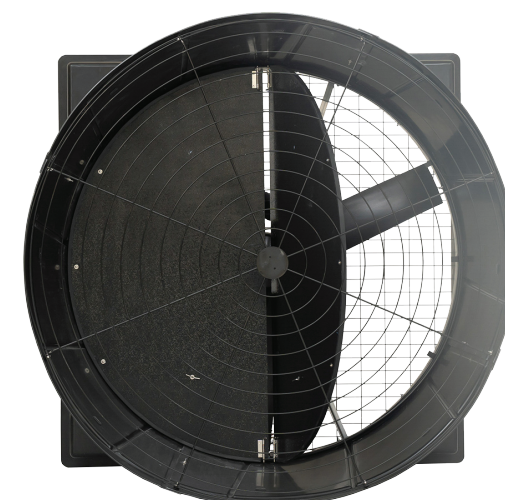
DIRECT X FEATURES

- Brushless Magnet EC Motor
- Fiberglass Reinforced SMC Shell
- Incorporated Ecotight Shutter or Butterfly Door
- Variable Speed/Soft Start
- Robust Direct-Drive Structure



DIRECT X BENEFITS

- Delivers exceptional performance: air volume, efficiency, and superior corrosion resistance.
- Robust housing slides mount through the wall, with a cone design that's no wider than the housing, allowing for closer spacing than traditional fans.
- Variable Speed Motor offers a wide operating range, superb Air Flow Ratio, and excellent efficiency, with no maintenance required for belts, pulleys, or tensioners.
- Durable Shutter has 8 years of industry performance and provide a superior seal while improving air volume. Doors fall back in place without a spring due to their unique angled installation.
- Direct drive fan with soft start allows for longer life on the motor and less wear on the components.



36"

Butterfly Door Part DRX362BB

14,080 CFM .05 SP
11,410 CFM .20 SP

**BESS Labs Test
#24338**

Ecotight Shutter Part DRX362WS

13,450 CFM .05 SP
11,620 CFM .20 SP

**BESS Labs Test
#24337**

48"

Ecotight Shutter Part DRX482WS

22,800 CFM .05 SP
18,700 CFM .20 SP

**BESS Labs Test
#24339**

51"

Ecotight Shutter Part DRX512WS

31,100 CFM .05 SP
26,300 CFM .20 SP

**BESS Labs Test
#24513**

57"

Butterfly Door Part DRX572BB

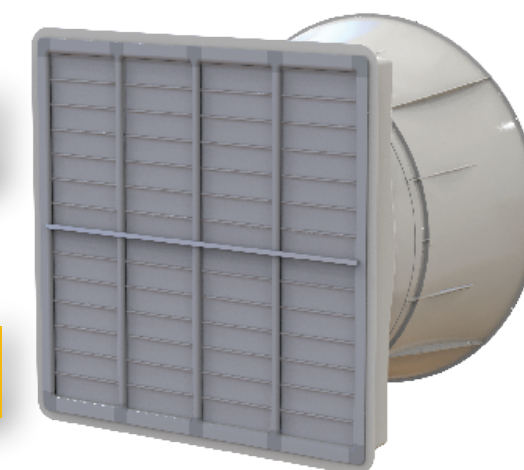
34,100 CFM .05 SP
29,200 CFM .20 SP

**BESS Labs Test
#24334**

Ecotight Shutter Part DRX572WS

32,900 CFM .05 SP
28,800 CFM .20 SP

**BESS Labs Test
#24333**

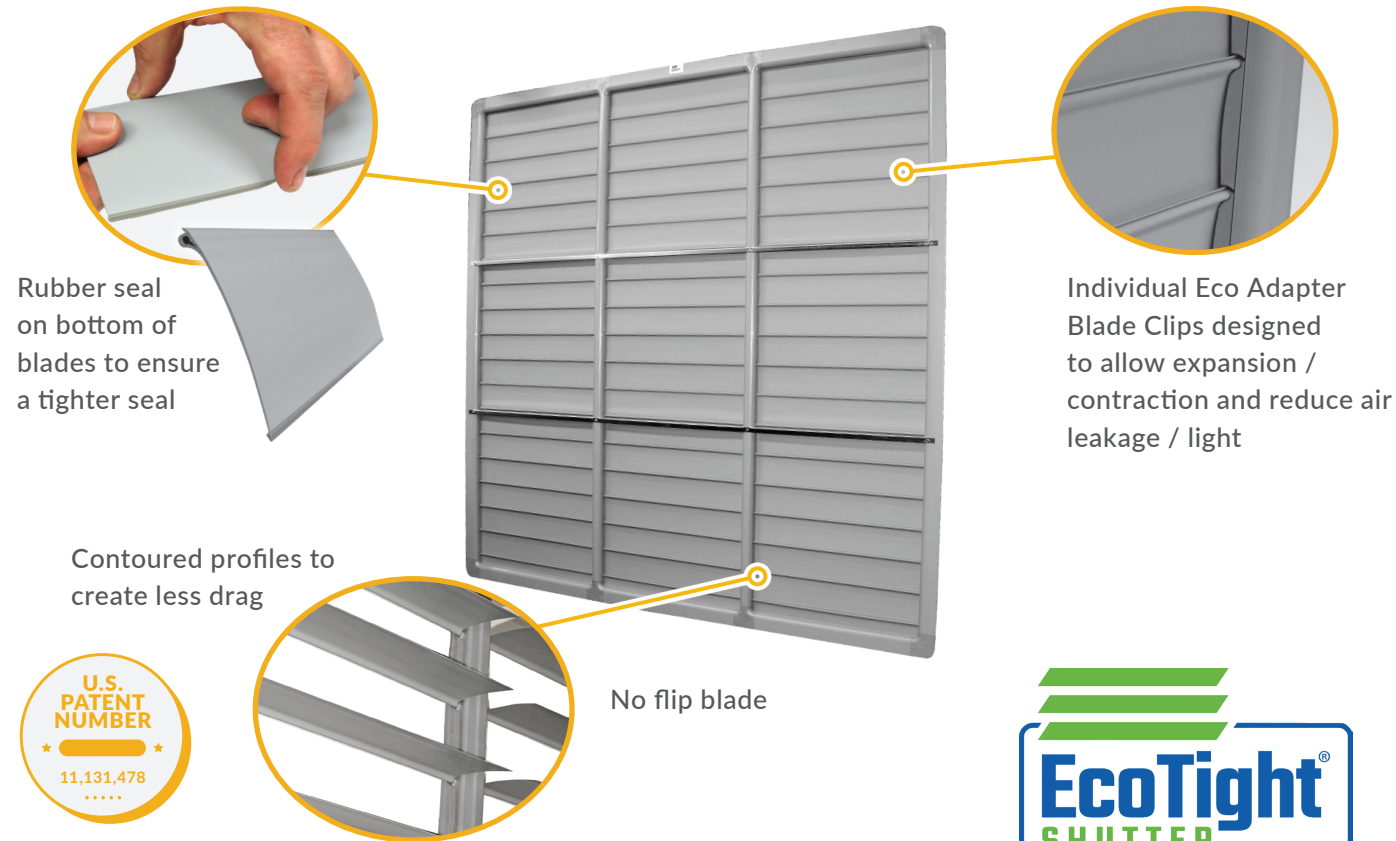


*Available in both white and black SMC Shell.



ECOTIGHT SHUTTER

Improves Fan Efficiency and Reduces Cold Air Leakage



MADE IN USA

BESS LAB TESTED

Based on a 30" Shutter,
the EcoTight Shutter had:

21.8% MORE AIRFLOW

17.1% LESS AIR LEAKAGE

than Double L's previous PVC Shutter

(Airflow Only - No Fan)
BESS Lab Tests: 16376 and 16377

SHUTTER FEATURES

- Custom-sized manufacturing to meet your specifications
- Sturdy twin-wall profile frame for extended lifespan and stability of the shutter
- Engineered for accommodating expansion and contraction
- Streamlined design to optimize airflow and reduce air infiltration into the room
- Adaptable to retrofit any existing rough opening
- Continuous hinge for each blade prevents flipping over, ensuring the blade doesn't get stuck in the open position
- Outstanding cleanability combined with durability to withstand pressure washing



SHUTTER COVER

Winterize EcoTight Shutters or Other Manufacturer's Fan Shutters with Shutter Cover



SHUTTER COVER FEATURES

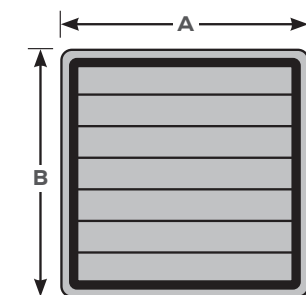
- Effortlessly winterize fan shutters with no need for removal
- Effectively halts cold air leaks and prevents shutter flutter
- Boasts an R-Value of R3, due to multiple vanes in the panel
- Easily storable and light to handle during summer months
- Pre-installed flex tip U-Channel seals off from water, dirt, or air leakage
- Compatible with Eco Tight Shutter and other fan shutters on the market
- Engineered for expansion and contraction
- Custom sizes are readily available



MADE IN USA

HOW TO MEASURE

Double L can manufacture to
your custom size



Shutter Cover Measurements are
outside of flange to outside of flange



Profiles designed for expansion /
contraction and easily snap into
shutter frame

NEW
PRODUCT

DX CIRCULATION FAN

- Variety of sizes to match your requirements
- Orifice around prop for better control of air and higher centerline velocity.
- Fiberglass housing for superior corrosion resistance
- Mounting bracket makes for easy angle adjustment
- Enclosed housing throws air further than traditional basket fan



Diameter	Voltage	Hz	HP	CFM
14"	240/480	60	0.16	1400
18"	240/480	60	0.33	2700
22"	240/480	60	0.5	4400
28"	240/480	60	1.5	10430

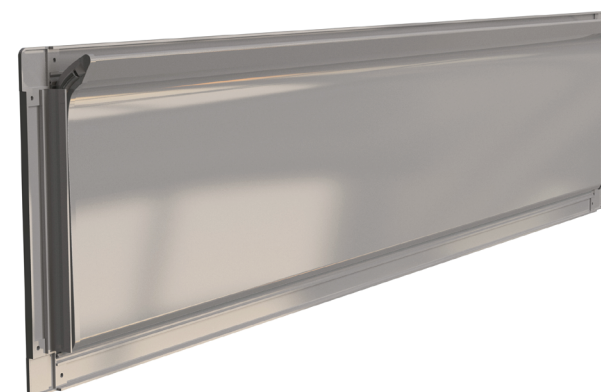
NEW
PRODUCT

GALVX INLET

Wall Inlet for Retrofit



Part 62000



GALVX FEATURES

- Plastic Frame
- European Curved Blade Design
- Brush Seal
- Fully Insulated Blade
- UV Protected
- Continuous Hinge
- Designed to cover 7"-9" tall openings and widths of 48" or smaller

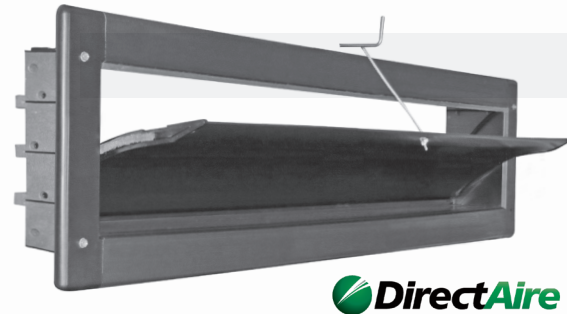
GALVX BENEFITS

- Designed to fully seal against air leakage and light.
- Designed to direct fresh air along ceiling-to-ceiling peak for effective air mixing.
- Reduces drafts and saves on heating costs.
- Built to be rodent and beetle resistant.
- Improves wet litter by preventing air leakage and condensation build up.
- Will not require wind/sun deflector.
- Directs airflow through inlet's opening rather than leaking out bottom and sides of inlet.
- Versatile to cover multiple different opening sizes.
- Easy to install.



DIRECTAIRE INSULATED INLETS

Aerodynamic, curved louver blade directs fresh air along ceiling for effective air mixing



DirectAire 4408

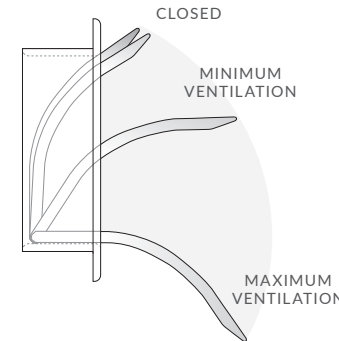
Part 90553CH

1,669 cfm @ 0.1 SP
BESS Labs Test #14334
Rough Opening: 44.5"L x 8.25"H
Inlet OD: 48" x 11.25"

DirectAire 4108

Part 90557CH

1,555 cfm @ 0.1 SP
Rough Opening: 41.5"L x 8.25"H
Inlet OD: 44.25" x 11.25"



- Curved louver blade guides fresh air to the ceiling peak, enhancing air mixing in larger poultry houses.
- PVC construction is fully sealed, preventing damage from darkling beetles.
- Outperforms metal inlets, delivering more air (cfm) and reducing the need for extra inlets.
- Airflow is directed through the inlet's opening, minimizing leaks at the bottom and sides.
- Efficiently pulls warm air from sidewalls 3 feet away, blending it with incoming fresh air during operation.

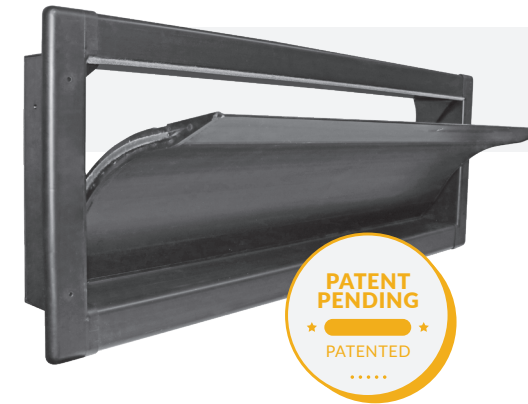


DO NOT STORE BOXES OR INLETS OUTSIDE OR IN DIRECT SUNLIGHT.
IF INSTRUCTIONS ARE NOT FOLLOWED, WARRANTY WILL BE VOID.



DELUXE DIRECTAIRE INSULATED INLETS

Fully insulated sidewall inlet that is rodent and beetle resistant – no exposed insulation



Deluxe DirectAire 4413

Part 90570CH

3,266 cfm @ 0.1 SP
BESS Labs Test #19260
Rough Opening: 44.5"L x 13.5"H
Inlet OD: 47.25" x 16.875"

Deluxe DirectAire 4113

Part 90572CH

3,050 cfm @ 0.1 SP
Rough Opening: 41.5"L x 13.5"H
Inlet OD: 44.50" x 16.875"

- Utilizes an aerodynamic, curved louver blade and housing to guide fresh air along the ceiling to the peak, facilitating effective air mixing at the center.
- Outperforms conventional metal inlets in delivering more air (cfm), resulting in a reduction in the number of required inlets.
- Simple snap-together assembly ensures easy installation, cost-effective freight, and effortless cleaning and adjustment.
- Mitigates bird drafting, leading to savings on heating costs and improved bird performance.
- Ensures a complete seal against air leakage and light infiltration.
- Crafted with fully insulated PVC that is resistant to rodents and beetles, with no exposed insulation.
- Channels airflow through the inlet's opening, preventing leaks from the bottom and sides.

"Installed these inlets in my two 66' wide houses. Gives an excellent airflow pattern, and the new insulated design minimizes sweating and water buildup."



DO NOT STORE BOXES OR INLETS OUTSIDE OR IN DIRECT SUNLIGHT.
IF INSTRUCTIONS ARE NOT FOLLOWED, WARRANTY WILL BE VOID.


**NEW
PRODUCT**

CUSTOM WALL INLETS

The perfect solution for your retro-fit project.



Custom 8" RetroAire

Part 90587

Inlet OD Width: RO Width +1.5"
Inlet OD Height: 10.75"

Custom 13" RetroAire

Part 90588

Inlet OD Width: RO Width +1.5"
Inlet OD Height: 14.50"



Custom 8" CSW

Part 90577

Inlet OD Width: RO Width +1.75"
Inlet OD Height: 11.25"

- Easy installation as custom sizes can be ordered to fit existing or new rough openings
- Constructed with flush mount framing to easily through opening
- Aerodynamic curved blade design allows for efficient air mixing
- Built in insulation and continuous hinge reduces condensation & freezing
- Plastic construction is beetle resistant
- Reduces bird drafting and wet litter

RETROAIRE FLUSH MOUNT INSULATED INLETS

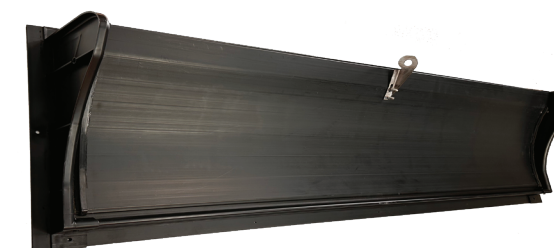
Designed to replace galvanized sidewall inlets



8" RetroAire

Part 90582

2,108 cfm @ 0.1 SP
BESS Labs Test #23408
Rough Opening: 44.5"L x 8"H
Dimensions: 46" x 10.75"



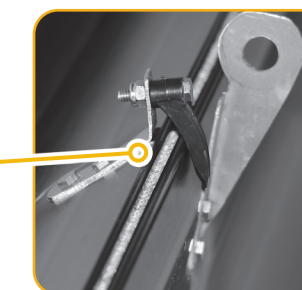
13" RetroAire

Part 90583

2,876 cfm @ 0.1 SP
BESS Labs Test #23405
Rough Opening: 41.5"L x 11.75"H
Dimensions: 43" x 14.5"



Brush seal provides
protection against air
and light leakages



- Designed with an aerodynamic, curved louver blade that directs fresh air along ceiling to ceiling peak for effective air mixing
- Excellent substitute for galvanized doors.
- Fully insulated PVC construction resists rodents and beetles.
- Prevents wet litter by averting air leakage and condensation buildup.
- Outperforms metal inlets, delivering more air (cfm) and reducing the need for additional inlets.
- Flush mount is fully sealed against air and light.
- Directs airflow through the inlet's opening, minimizing leaks at the bottom and sides.
- Continuous hinge reduces drafts on birds, saving on heating costs and enhancing bird health.




**NEW
PRODUCT**

DIRECTJET SLIDING WALL INLET

Actuated Wall Inlet for Retrofit or New Construction



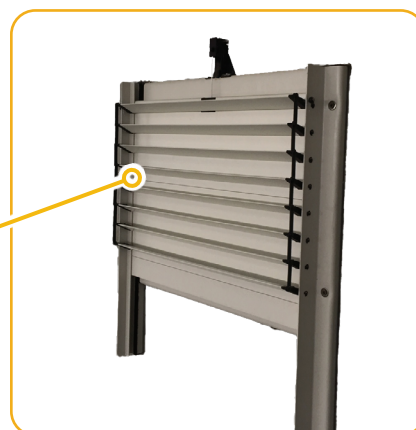
**Custom Sizes
Available Contact
our team for Part
Numbers**

- Compact design provides improved clearance within the house.
- Available in various sizes, ideal for retrofitting existing openings and new construction.
- Fully insulated frame enhances R-value and minimizes condensation.
- Integrated Bird Wire enhances biosecurity, preventing fowl from entering the inlet system.



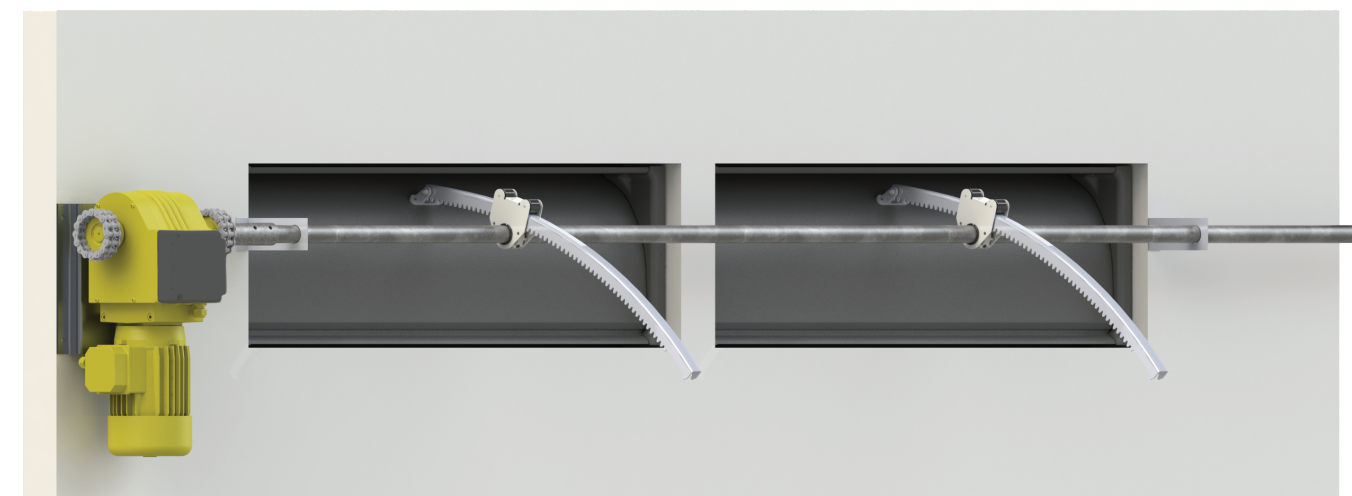
**DirectAir Sliding
wall Open**

**Optional directional air veins to
throw air in desired patterns**


**NEW
PRODUCT**

DIRECTJET CURVED INLET

Our Rack and Pinion driven inlet is engineered for optimal air throw and distribution. Its straightforward design ensures minimal maintenance requirements. The air inlet is equipped with brush seals to eliminate air leakage when closed, ensuring efficient functionality.



- Rack and Pinion Drive operated for positive precise control
- Constructed with corrosion resistant poly exterior
- Engineered as a close cell foam inlet that is non-absorbent to water
- Minimal air leakage with robust seal
- Designed with a curved blade that directs air along the ceiling to mix air at the center of the house
- Creates uniform mixing pattern
- Components are similar to the parts utilized on other Double L rack and pinion drive products
- Easier maintenance with our complete system



Front view of inlet

**Multiple Sizes
Available. Contact
for more details.**



DEFLECTORS FOR SIDEWALL INLETS

Proven to be the most efficient poultry hood on the market. Designed for minimal air restriction



Deluxe DirectAire

Part 90555C

4413 / 4113 Inlet Size
48"L x 18.75"H x 12"D



DirectAire

Part 90555WDC

4408 / 4108 Inlet Size
48"L x 13.25"H x 8"D

WARNING!



WIND DEFLECTOR NEEDS TO BE INSTALLED TO PROTECT INLETS FROM DIRECT SUNLIGHT

WARRANTY VOID IF WIND DEFLECTOR IS NOT USED ON DIRECTAIRE INLETS

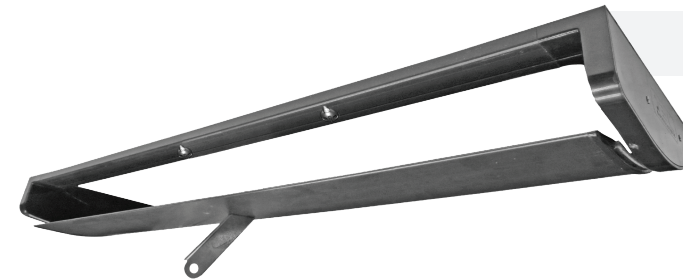
- Plastic Construction for Durability
- Restricts Rain, Wind & Sun Access
- UV protected from sun rays and will not brittle over time
- Designed for minimal air restriction and only restricts the air 13.03% when the inlet is fully open (BESS Labs Test No. 17551)
- Brings in more air at a higher velocity than wood alternative
- Leads to drier litter moisture content over an extended period of time.
- Light Reflection is reduced by texturing on the hood

"I love this new hood design! It protects my inlets from the sun and the wind, and I've found my sidewall inlets operate more efficiently than my other houses with the wood and tin design."



CEILING SIDEWALL INSULATED INLETS

Insulated, aerodynamic, curved louver blade directs fresh air along the ceiling to ceiling peak for maximum air mixing



CSW4612

Part 90560

2,413 cfm @ 0.1 SP
BESS Labs Test #19259
Rough Opening: 46.5" x 12.5"
Inlet OD: 48" x 14.875"



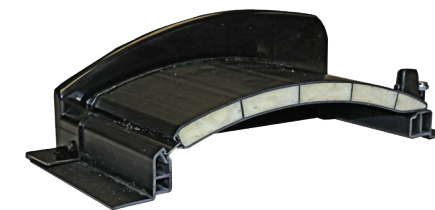
CSW4612 cutaway with insulated foam filled blade and housing



CSW4608

Part 90569

2,549 cfm @ 0.1 SP
BESS Labs Test #19258
Rough Opening: 46.5" x 8.5"
Inlet OD: 49.5625" x 11.1875"



CSW4608 cutaway with insulated foam filled blade



- Aerodynamic, curved louver blade directs fresh air along ceiling to ceiling peak for effective air mixing
- Proven tight seal and design minimizes air leakage resulting in reduced fuel usage
- Fully insulated blade and housing help increase insulation value
- Minimal sweating occurs on inlet in cold climates with full insulation
- All PVC construction that is resistant to corrosion and infestations



360° INSULATED INLETS

360° airflow heavy-duty radius corner design increases fuel savings, air distribution, and air mixing



GC1140 (Gravity)

Part 90678
1,659 cfm @ 0.10 SP
BESS Labs Test #14005

Rough Opening: 23.75" x 23.75"
Inlet OD: 27.25" x 27.25"

AC3010 (Actuated)

Part 90671
2,050 cfm @ 0.10 SP
BESS Labs Test #14006

Rough Opening: 23.75" x 23.75"
Inlet OD: 27.25" x 27.25"

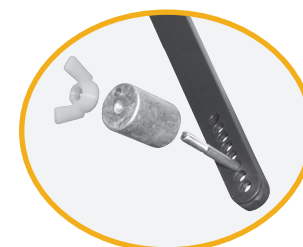


- Heavy-duty radius corner design enables 360° airflow, enhancing fuel savings, air distribution, and mixing
- Specifically designed for cold climates with a fully insulated housing to minimize heat loss and prevent freeze-up
- Market's tightest seal, ensuring minimal leakage when the attic inlet is closed.
- Larger bottom board directs air along the ceiling, minimizing downdraft compared to the competition.
- Bottom lid is easily removable and reattachable with attachable straps, eliminating the need for bolts or screws.
- Housing crafted with four-point pivot reactive injection molding (RIM)



REDESIGNED 360° AIRFLOW INLETS

Improved GC1140 and AC3010 with super tough structural foam for added strength and insulation value



EASILY ADJUSTABLE
COUNTERWEIGHT

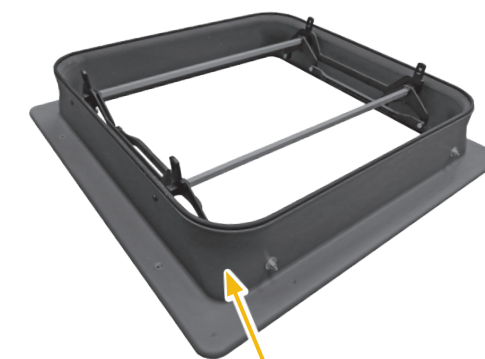


EASY TO CLEAN

Easy to remove and reattach
bottom lid with attachable straps –
no bolts or screws to take off

GC1140

Gravity 360° Airflow
Insulated Inlet



RADIUS CORNERS
FOR 360° AIRFLOW
WITH NO DEAD SPOTS

Air doesn't hit square
corners and deflect
back into inlet



NEW IMPROVED SEAL

For increased protection
against air leakage

HOUSING MADE OF FOUR POINT PIVOT
REACTIVE INJECTION MOLDING (RIM)

... and heavy-duty PVC and
stainless steel components



2-WAY INSULATED CEILING INLETS

Withstand Harsh Environments and Cold Weather Conditions



JD2600 Actuated OR Gravity

Part 90841 (Gravity)

CFM: 2,490 @ 0.05 SP
Bess Labs Test #05181
Rough Opening: 29" x 24.5"
Inlet OD: 30.50" x 27.00"

Part 90840 (Actuated)

CFM: 2,135 @ 0.05 SP
Bess Labs Test #05097
Rough Opening: 29" x 24.5"
Inlet OD: 30.50" x 27.00"

- Excellently regulates airflow from minimal to maximal levels
- Effectively directs air along the ceiling for proper air mixing
- Constructed from a durable, single-piece, insulated, and corrosion-resistant rotomolded housing
- Minimize condensation, dripping, and inlet freeze-up with 1-inch thick insulated lids
- Frictionless styrofoam PVC-covered lids on a continuous PVC hinge
- Lids effortlessly swing down, allowing the entry of clean attic air into the main room
- When the lids are closed, the inlet securely seals against air leakage
- Showcases resilience in harsh environments and extreme cold weather conditions



DL INSULATED INLET SERIES

Most Efficient Air Mixing Inlet on the Market



DL3232

Part 90302P

4,144 cfm @ 0.10 SP
BESS Labs Test #18564
Rough Opening: 28" x 28"
Inlet OD: 32" x 33"



DL4727

Part 90301

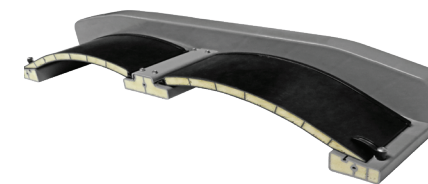
4,628 cfm @ 0.10 SP
BESS Labs Test #19572
Rough Opening: 44" x 24.75"
Inlet OD: 46" x 27.25"



DL3127

Part 90300

3,107 cfm @ 0.10 SP
BESS Labs Test #16694
Rough Opening: 29" x 24.75"
Inlet OD: 31" x 27.25"



DL INLET CUTAWAY

- Adaptable as a single or double pull configuration
- Effortless inlet installation with pre-installed mounting hardware
- Constructed from virgin PVC for robust durability against power washing, and fully insulated to prevent condensation
- Square design facilitates precise air movement during minimum ventilation and enables maximum CFMs in the fully-open position
- Boosts air velocity upon entry, enhancing air distribution and mixing within the room
- Rough opening designed to seamlessly fit standard filter boxes in the industry



WHY USE CEILING INLETS?

Benefits of Ceiling Inlets

- Can be used as a tool to promote drier litter and reduce humidity inside the house by promoting higher ventilation rates without increased fuel usage
- The GC1140 has a fully insulated housing that uses tempered attic air, reducing likelihood of inlets freezing up and condensation
 - During most frigid, cold days of year it is very beneficial to bring tempered attic air into the house that is preheated and has a chance to mix with hot air at the peak of the house minimizing the use of sidewall inlets during cold weather
- Provide optimal air distribution and mixing
 - Bringing air through attic will blend with the hot air near the peak, and will push warm, fresh air down to bird level providing optimal mixing of the air

No ceiling Inlets Used

- When only sidewall inlets are utilized, there are increased instances of freezing / sticking open during cold weather
- Excess condensation on sidewall inlets that is absorbed into the litter
- Bringing in cold air from the sidewall inlets exclusively can result in increased fuel usage
- These weaknesses can prove costly, especially in modern houses



3D Rendering of attic inlet airflow in a poultry house

Attic Air Inlets Beneficial Year Round in Poultry House

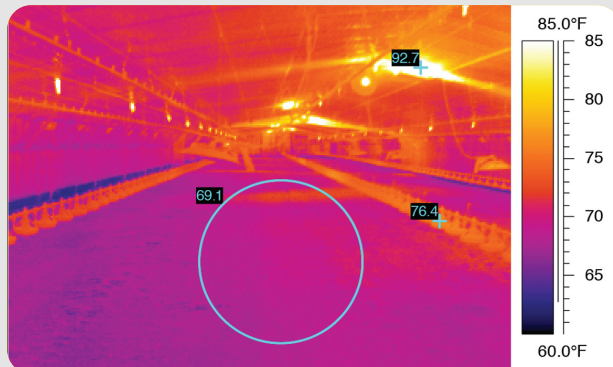


Photo 1 is taken in a 50' x 500' house during springtime when the outside temperature was in the low 60s and with a few inches of fresh, damp shavings. The 93 degree F air coming in through the house's attic inlets raised the house temperature to the mid seventies and the floor temperature to nearly 70 degrees F after only a couple hours of operation. When compared to a house ventilating through side wall inlets, the floor temperatures remained in the low sixties, resulting in little litter drying.

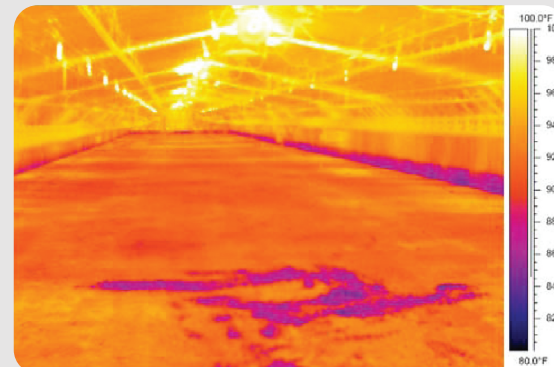


Photo 2 is taken in a 40' x 500' house on a typical summer day with outside temperatures in the mid eighties and with a few inches of fresh, damp shavings. In just a few hours the attic inlets increased the house temperature into the mid-nineties and the floor temperature to about 90 degrees F. The top surface of the fresh litter was beginning to dry. When compared to side wall ventilating, the cool damp litter remained below the surface.



SINGLE STAGE THERMOSTAT

Designed to provide precise control of heating, cooling, and ventilation systems



TH415

Part 50165

Temperature Range: 40° to 104° F (4° to 40° C)

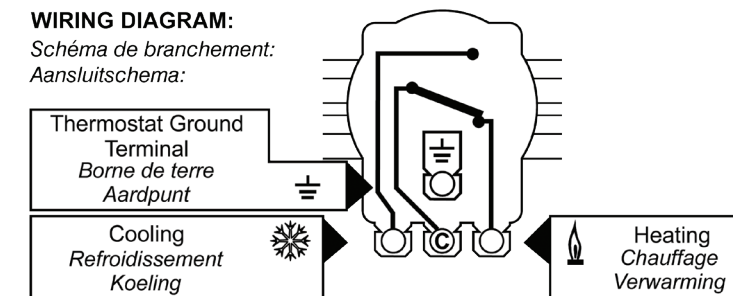
- Designed to provide precise control of heating, cooling, and ventilation systems in corrosive environments
- Fast responding stainless steel sensor resists corrosion
- Adjustable dial for simple calibration in the field
- Accurate temperature control with long life in livestock confinement buildings
- Water-resistant NEMA 4x enclosure resists airborne contaminants

Volts A.C. 50/60 HZ	120V	240V
Full Load (inductive)	12A	10A
Lock Rotor Amps	48A	36A
Full Load Amps (resistive)	16A	16A
VA Pilot Duty (VA/Watts)	125	125

Adjustable knob allows for easy recalibration

WIRING DIAGRAM:

Schéma de branchement:
Aansluitschema:





DOUBLE L POP DOOR



**Custom Sizes
Available. Contact
for Part Number**

- Solid airtight closure for house tightness
- Fully insulated to prevent condensation from entering inside wall
- Bypass wall frame allows to fully seal off opening
- Applicable with automated/manual winching system
- Various Sizes available for best fit
- Prevents determined predators from entry

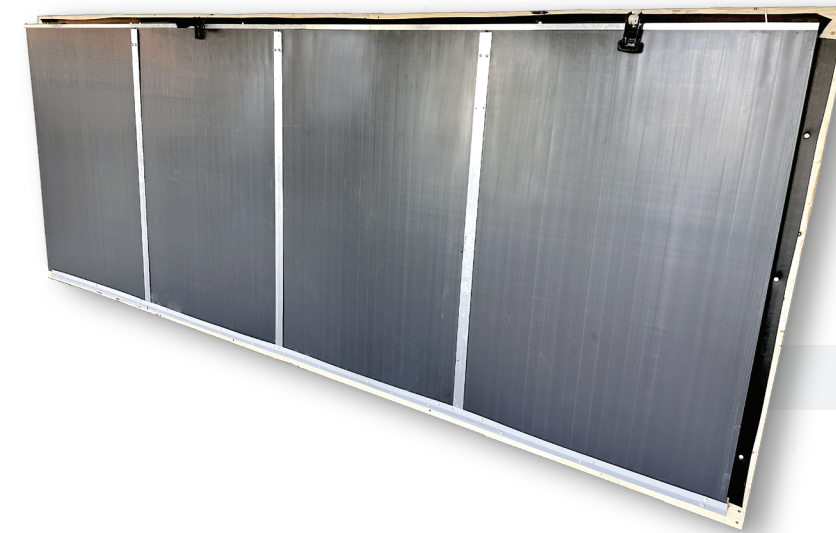


Multiple Slide
Options



**NEW
PRODUCT**

ECOTIGHT TUNNEL DOOR



5' Tunnel Door

Part 31102W

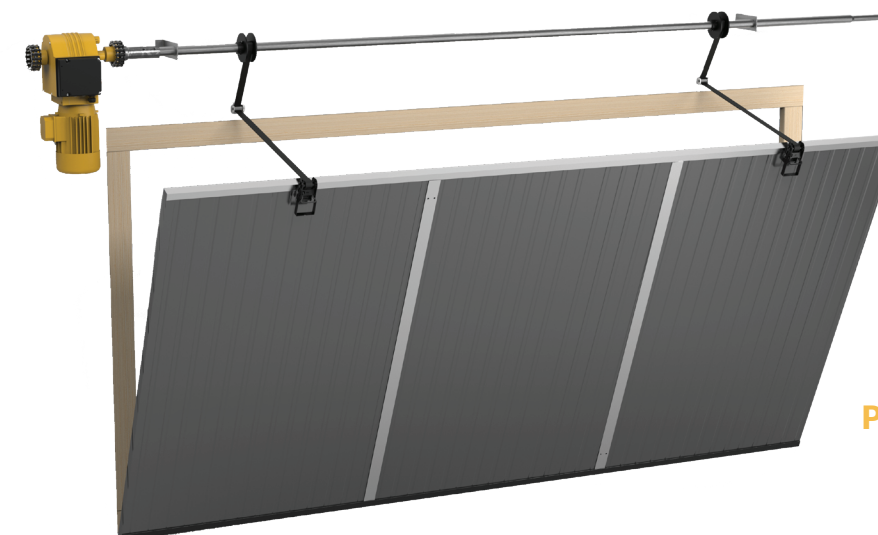
Door Thickness: 1-3/8"
Door Dimension: 39.3" x 60"

4' Tunnel Door

Part 31101W

Door Thickness: 1-3/8"
Door Dimension: 39.3" x 48"

- Easy and fast installation
- Custom Sizes Available
- Unique plastic design is more durable than metal
- Continuous hinge provides maximum sealing to reduce cold-air leakage
- Ratchet Strap design provides effortless tunnel door adjustments
- Easier to handle with its smaller door design



**Now Available
Pipe Driven
EcoTight Tunnel Door**

Pipe Drive Kit Part No 31104



DIRECTAIRE PLUS STIR FANS

- Up 15% more CFM compared to the original DirectAire
- New rotor motor technology allowing the motor to run cooler
- Brushless motor allows for smoother operation
- IP54 motor rating
- Powder coated, steel blades
- Two speed rotor motor
- Included Mounting Bracket
- 3-Year Warranty



18" Stir Fan

Part 90718
24" diameter x 4.8"
BEES Labs Test c22275

20" Stir Fan

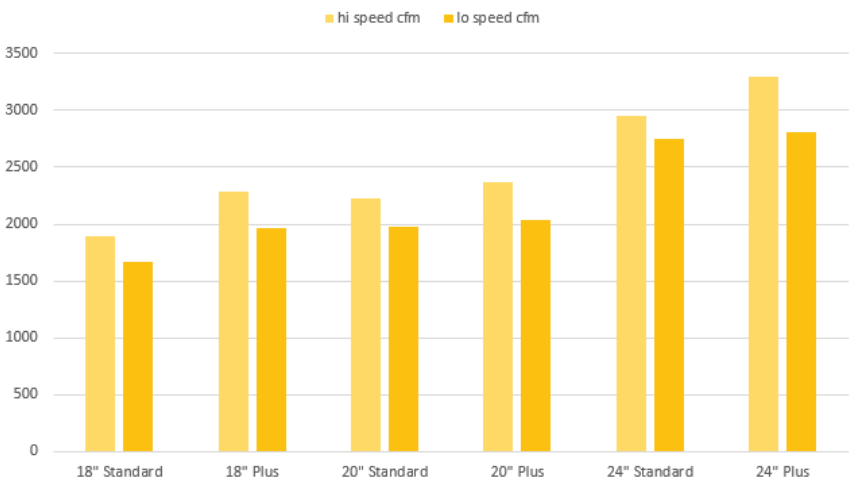
Part 90720
25.6" diameter x 5.1"
BEES Labs Test c22274

24" Stir Fan

Part 90724
30" diameter x 5.6"
BEES Labs Test c22273

BLADE DIAMETER	HP	VOLTS	AMPS	HZ	SPEED	LOW CFM	HIGH CFM	PHASE
18"	1/5	120	1.3	60	2	1970	2280	1
20"	1/5	120	1.3	60	2	2040	2379	1
24"	1/5	120	1.4	60	2	2810	3300	1

DirectAire Standard vs. DirectAire Plus Stir Fans



DIRECTAIRE STIR FANS

Steel bearings and 1/5 HP sealed motor for years of long life

- Mixes Cold Floor Air with Hot Ceiling Air
- Less Heater Cycles
- Widespread Grill Guard
- Included Mounting Bracket
- 2-speed circulation fan – high and low settings
- Extra Amps to spare
- Excellent Thrust CFM
- 3-Year Warranty
- UL LISTED AND UL LISTED TO CANADIAN SAFETY STANDARDS



18" Stir Fan

Part 90618
21" diameter x 7.25"
BEES Labs Test c22270

20" Stir Fan

Part 90614
22.8" diameter x 7.3"
BEES Labs Test c22271

24" Stir Fan

Part 90600
29" diameter x 9"
BEES Labs Test c22272

BLADE DIAMETER	HP	VOLTS	AMPS	HZ	SPEED	LOW CFM	HIGH CFM	PHASE
18"	1/5	120	0.94	60	2	1670	1890	1
20"	1/5	120	1.07	60	2	1980	2230	1
24"	1/5	120	1.2	60	2	2750	2950	1

"Used the stir fans in my houses and really helped even out the temperature distribution in winter to save gas. Have had these three years and they're still working great!"




**NEW
PRODUCT**

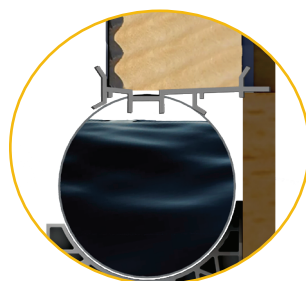
DIRECTAIRE COOL CELL SYSTEM

The DirectAire Cool Cell system is our corrosion resistant system for cooling to provide longevity, efficiency, and easy maintenance for the grower to utilize in their house.

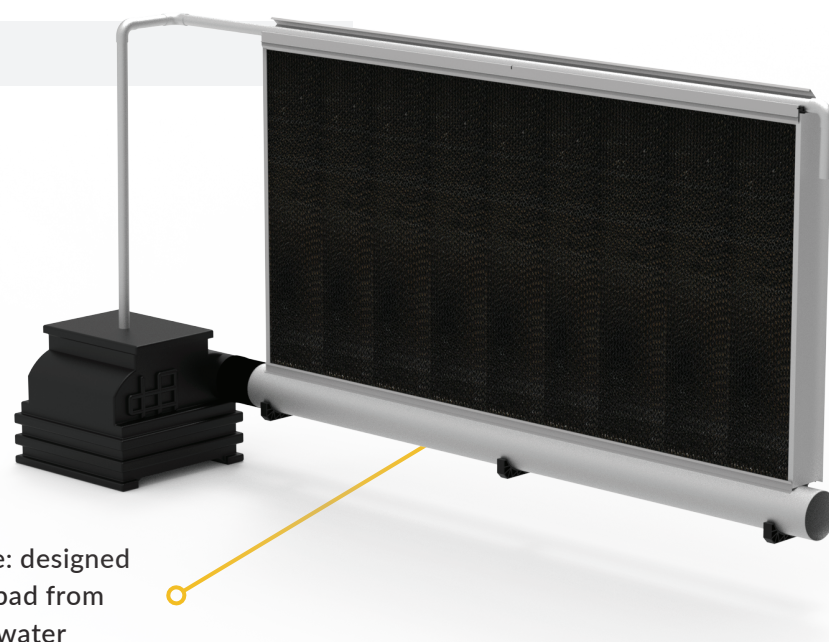
DirectAire Cool Cell

Part 31150

Internal Water Capacity: 2.6 gal per ft.
12" tank capacity: 23.5 gal
Pad Thickness: 6"
Pad Height: Size varies between 36"-72"



Extend pad life: designed to keep the pad from sitting in water



- Unique trough design allows 20% increase in water capacity than other systems
- Durable, UV resistant, plastic design that is corrosion resistant
- Open-top design allows for visual inspection of water jets and easy access for cleaning
- Features less components for quick and easy installation
- Multiple layouts to fit your specific needs


**NEW
PRODUCT**

EVAPORATIVE COOLING PADS

The DirectAire Cooling pad is a meticulously crafted cooling solution with its efficiency and durability. Tailored for livestock facilities, its design ensures optimal cooling, promising years of dependable service.



DirectAire Cooling Pad

Part 31163

Dimension: 36" H x 12" W x 6" D

Part 31164

Dimension: 48" H x 12" W x 6" D

Part 31160

Dimension: 60" H x 12" W x 6" D

Part 31161

Dimension: 72" H x 12" W x 6" D

Part 31162

Dimension: 84" H x 12" W x 6" D

- Unique structure provides a larger evaporation surface aiding in an outstanding cooling efficiency
- High face velocity enables air to pass through the pad without water droplet carryover
- Specially treated for corrosion resistance, mildew resistance and high structural strength to have a long service life
- Low pressure drop ensures that high-velocity air moves through the pad with minimal resistance
- Self-cleaning design, thanks to the steeper angle of the unequal flute design, flushes dirt and debris from the pad's surface



LAYER DIVISION

- Attic, Wall and Ceiling Inlets
- Hoods / Wind Deflectors
- PVC Shutters
- 1/5 HP Stir Fans
- Thermostats
- Winches
- Cool Cell System
- Rack & Pinion Systems
- Pop Out Doors

SWINE DIVISION

- Attic and Wall Inlets
- Ductwork
- PVC Shutters
- Flooring
- Pig Mat
- Curtain Pockets
- Thermostats
- Accessories
- Winches

BROILER DIVISION

- Wall and Ceiling Inlets
- Tunnel Doors
- Hoods/Wind Deflectors
- Cool Cell System
- 1/5 HP Stir Fans
- Linear Actuator
- Thermostats
- Flooring
- Winches

DAIRY DIVISION

- Fans
- Evaporative Cooling
- Tunnel Doors
- Rack & Pinion
- Attic and Wall Inlets
- PVC Shutters
- Curtain Pockets
- Accessories
- Winches

Since 1973, Double L has committed to providing high-quality products and services worldwide that are based on value, customer's needs, and excellent sales support.

Double L Group, LLC strives to provide our distributors and customers with innovative products that offer the best return on investment.

CONTACT DOUBLE L FOR:

- High Quality Materials and Products
- Quality Design for Compact Shipping
- BESS Lab Testing of Ventilation Products
- Exceptional Service on all Products
- Informative Website with Informational Product Videos

2020 Beltline Road | PO Box 324 | Dyersville, Iowa 52040-0324
800-553-4102 | 563-875-6257 | sales@doublel.com | www.doublel.com



Disclaimer of warranties and limitation of remedies: the manufacturer of these products provides a limited warranty and Double L Group LLC will provide further information relating to the manufacturer's warranty upon request. Subject to that manufacturer warranty, for which the manufacturer and not Double L Group LLC is solely liable, these products are offered by Double L Group LLC as is, with all faults and without any representations by Double L Group LLC as to quality, performance or suitability. Double L Group LLC specifically disclaims any and all warranties, express or implied, including without limitation all warranties of merchantability or fitness for a particular purpose. Under no circumstances shall Double L Group LLC or any of its employees, directors, officers or agents be liable, in tort, contract or otherwise, for any direct or indirect losses or damages in any way arising from or related to any product purchased, including without limitation the condition or performance of the product, whether such damages are general, special, consequential, incidental, economic, exemplary or otherwise. This includes but is not limited to damage or injuries to person, property, or animals, business interruption or other economic loss. This disclaimer of liability shall apply even if an authorized representative of Double L Group LLC has been advised of or should have known of the possibilities of such damages.