



DOUBLE L
GROUP LLC

HOG GAZETTE

**CELEBRATING *50 YEARS* OF
QUALITY PRODUCTS AND SERVICE**

Proven and tested
products since 1973

***NEW* Products**
INCLUDED IN THIS ISSUE!

MEET
OUR
TEAM



Courtney Duffy
Swine & International
Sales Manager
cduffy@doublel.com



Elizabeth Beeler
Vice President Sales
ebeeler@doublel.com



Justin Lowe
Product Manager
jlowe@doublel.com

Since 1973, Double L Group has committed to providing high-quality products and services worldwide that are based on value, customer needs, and excellent sales support. Our team of dedicated professionals are ready to help you choose the right products and answer any questions about installation. Contact us today!



INDEX

Meet Our Team2

Winch Systems3

Metal Products.....4

Nursery Flooring 5-7

Farrowing Flooring.....8-12

Actuated Wall Inlets13-15

Shutters.....16-17

Gravity Wall Inlets18-19

Ceiling Inlets 20-26

Ductwork.....27

Pig Mat..... 28

Accessories.....29-31

About Us..... 32



WINCH SYSTEMS



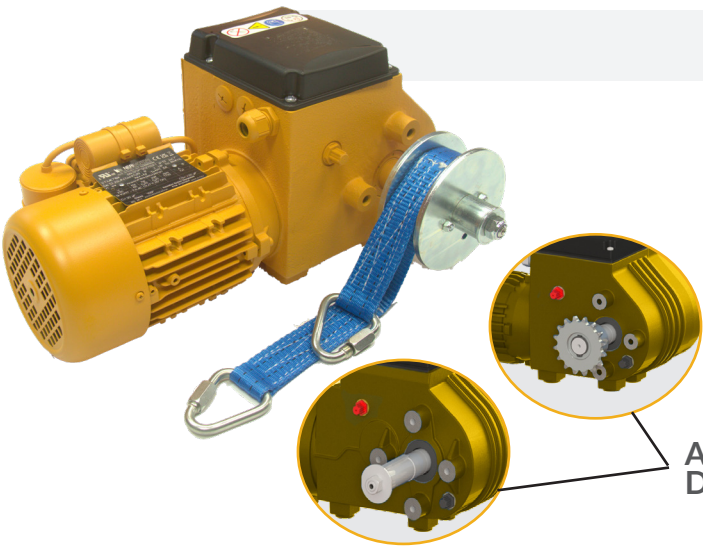
ECODRIVE WINCH SYSTEMS

Delivering Optimal Power for Ventilation Systems

- For the best climate and animal welfare
- Flexible installation
- Multiple inlets can be controlled at the same time
- Low-maintenance and low-noise
- Perfect Price/Performance Ratio
- Compact and Smart Design
- Includes emergency limits

3 Year
Warranty

APPLICATION SPECIFICATIONS		
	EcoDrive 300	EcoDrive 90
CSW	230 Inlets	65 Inlets
DL	75 Inlets	35 Inlets
DirectAire	140 Inlets	100 Inlets
Tunnel Doors	130 ft. Long	N/A
Lift Curtains	275 ft. Long	N/A



EcoDrive 300

Part	17001
Torque	300 Nm
Belt Speed	28 in./min.
Pulls	1 Belt = 809 lbs/belt 2 Belts = 1050 lbs/belt or 2100 total
Voltage:	0.35 HP 115V 1 Phase 60hz

Available for Pipe or Belt
Drive Applications

EcoDrive 90

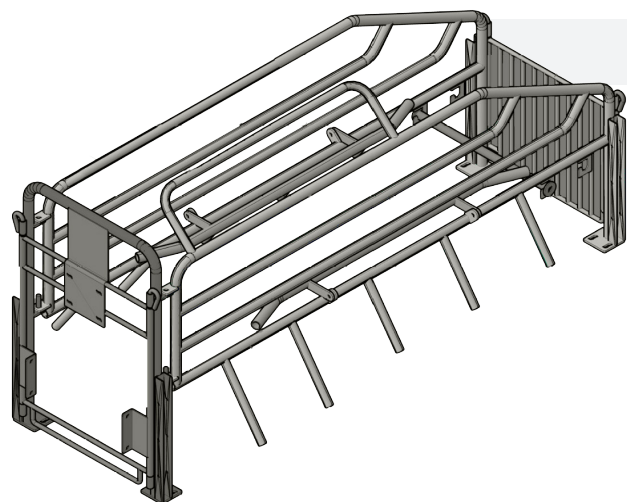
Part	17002
Torque	90 Nm
Belt Speed	6 in./min.
Pulls	1 Belt = 750 lbs/belt 2 Belts = 386 lbs/belt or 772 total
Voltage	24 DC





SWINE METAL PRODUCTS

Provides greater comfort to the sow or gilt while attending to new genetic lines.

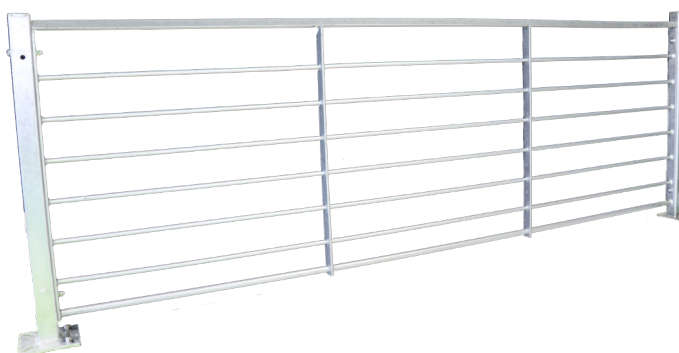
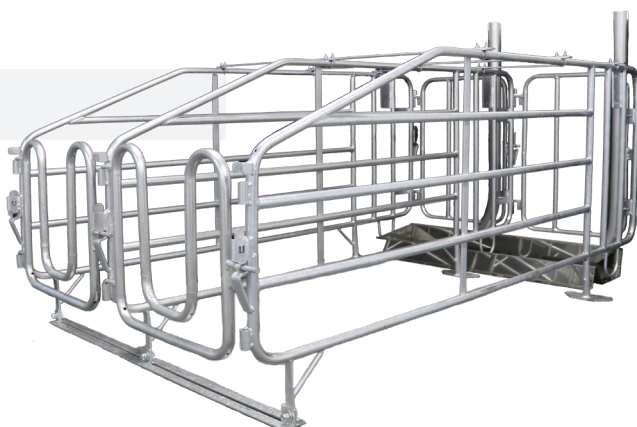


Double L Farrowing Crate

- Attached flip up and down anti-crush bar slows sows movement
- Accurately placed finger bars allow nursing pigs protection at teat access
- Adjustable 2-setting rump bar ensures accurate pen sizing
- Outfitted with feeder/water attachment simplifying installation
- Designed with single pull latching system
- Option available to not add anti-crush bar, rump guard or fingers

Double L Gestation Stall

- Easily implement husbandry tasks with the step through back gate
- Simple installation with left and right side hinged gating
- Designed with single-pull latching system
- Built in flat bar to reinforce bolting the structure to the floor
- Includes a customizable stainless steel trough
- Removable hot dipped galvanized feed tube

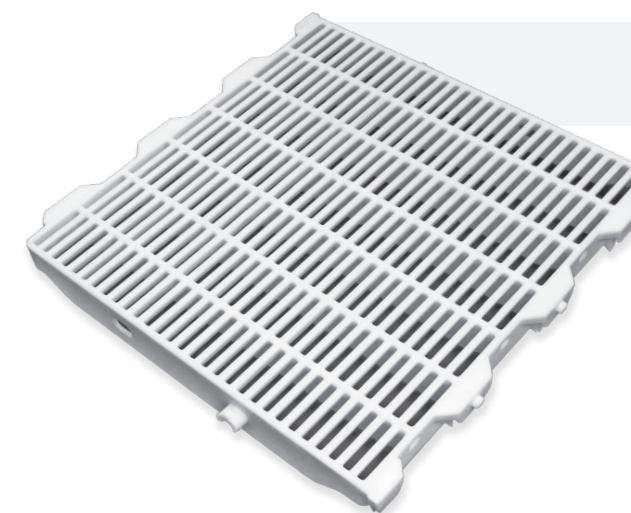


Double L Gating

- Welding is done around the entire rod at the end of a bar to reduce corrosion area
- Rods pass through bars, aiding in strength and durability
- Option to order posts and feet as galvanized or stainless steel
- Meets ASTM A123 Standards
- Modify to fit new construction or remodel applications
- Variable gauge sizing in rods throughout top to bottom



ADVANTAGE NURSERY



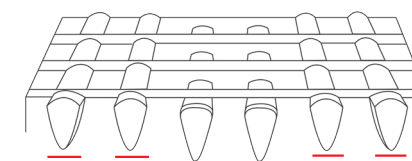
FILTER-EEZE® 24" x 24" ADVANTAGE NURSERY FLOOR

Part No. 13120

Dimensions 24" x 24" (610 x 610 mm)



MADE IN USA



HIGH / LOW RIB DESIGN

- Easy to clean and disinfect polypropylene slat, reducing transmission of diseases
- Rugged virgin polypropylene is non-conductive - reducing chilling and stress on pigs
- Solid plastic construction is rust / corrosion proof and resists bacteria build-up, shedding waste easily
- Heavy-duty design with excellent impact resistance

EXCELERATOR NURSERY



FILTER-EEZE® 24" x 24" EXCELERATOR NURSERY FLOOR

Part No. 13125

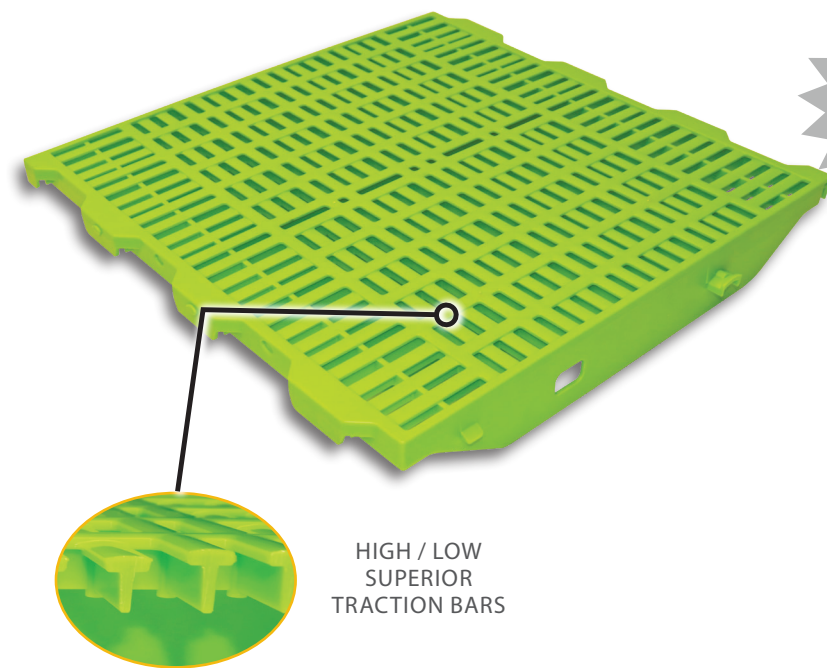
Dimensions 24" x 24" (610 x 610 mm)



MADE IN USA



PREMIER NURSERY



VIRGIN
MATERIAL

Part No. 13130

Dimensions 24" x 24" (610 x 610 mm)



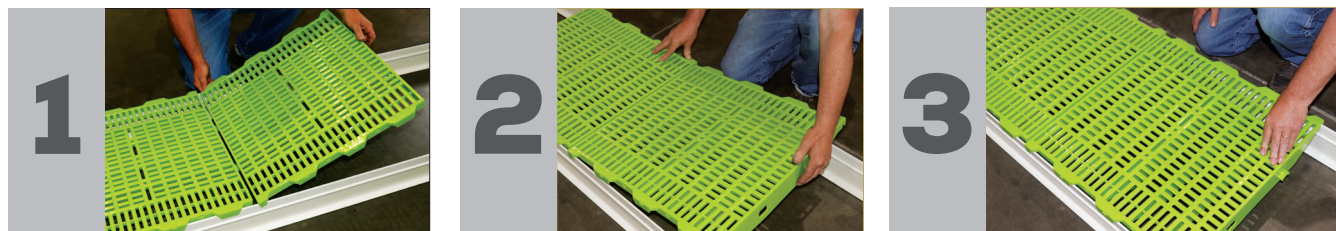
MADE IN USA



TIE DOWN

- Green color allows for a bright inviting work environment along with early detection of scours and body condition loss
- Detection of solids made easier upon bio-security inspection
- 7/16" Openings and Crowned Tops for Optimal Manure Filtration
- 24" x 24" Design Reduces Cost & Quantity of Beam / Flooring
- Reinforced Deep Cross Ribs Enhance Strength
- Easily Pressure Wash Clean with Prime Gap Locations
- Built with Rugged Virgin Polypropylene Construction
- Reduces Chilling and Stress on your Pigs.
- 3 Year Warranty

REVERSIBLE MAKING INSTALLATION AS EASY AS...



Snaps Together for Fast and Easy Assembly. No Special Tools Required!



5" PERMABEAM

When selecting Double L beam you are selecting the strongest fiberglass support beam on the market. Choosing high density beam reduces sponginess of your flooring and provides a strong support structure.

HIGH-QUALITY ENGINEERED - RUST AND CORROSION PROOF

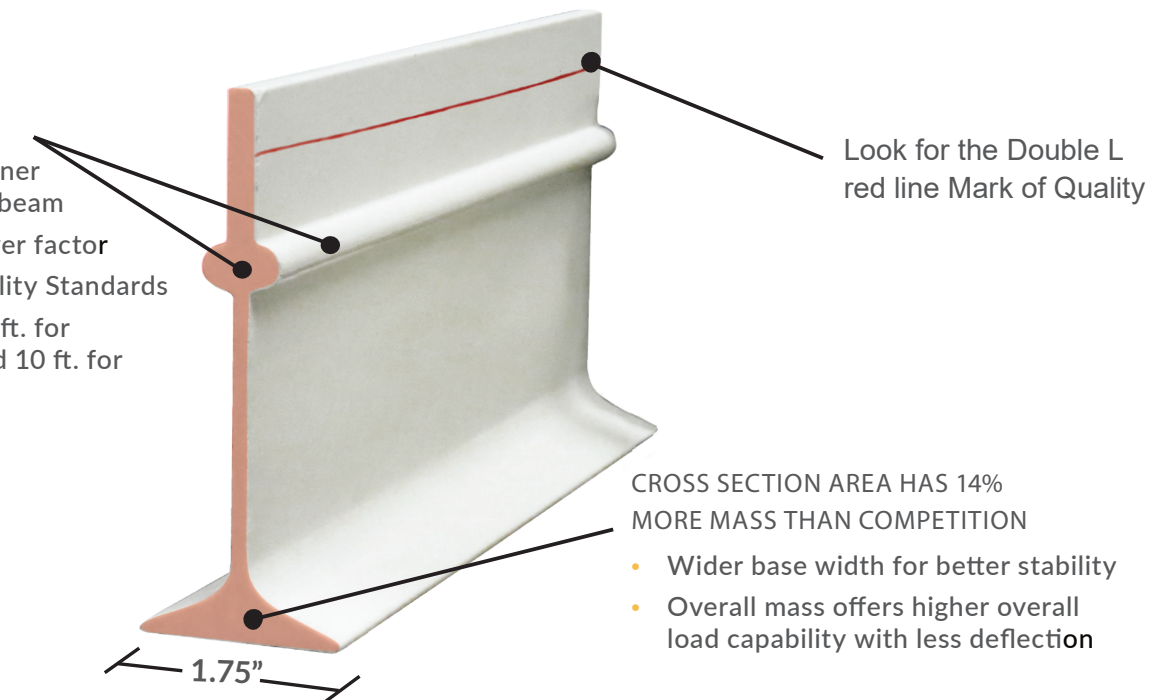
Part 12305

SUPERIOR STRENGTH!

- Lateral design stiffener provides straighter beam
- Reduces base rollover factor
- ISO 9001 High Quality Standards
- Clear spans up to 8 ft. for farrowing floors and 10 ft. for nursery floors



MADE IN USA

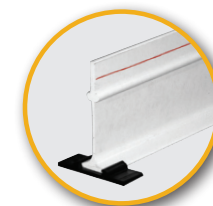


Look for the Double L
red line Mark of Quality

CROSS SECTION AREA HAS 14%
MORE MASS THAN COMPETITION

- Wider base width for better stability
- Overall mass offers higher overall load capability with less deflection

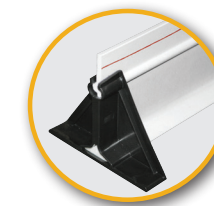
PERMABEAM FLOORING ACCESSORIES



PLASTIC
CLIP

Part 12318

Protects beam from
rubbing on concrete



PLASTIC
TRIANGLE

Part 12319

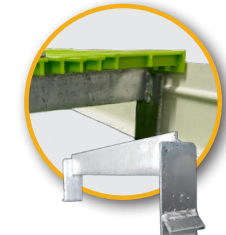
Protects and
stabilizes
fiberglass beam



LEG
SUPPORT KIT

2 Supports - Part 12301
1"-12' Tubing - Part 12300

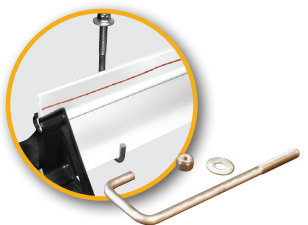
Beam support for
longer clear spans



TIE
DOWN BAR

Part 12306

Designed to hold
crate secure to floor
without compromising
beam strength



J-BOLT, WASHER,
AND LOCKNUT

7.5" (190.5 mm)
Part 12360
4.5" (114.3 mm)
Part 12369

Specifically designed
to fit PermaBeam



FILTER-EEZE® POLYPROPYLENE PLASTIC FLOORING



12" x 18" MAXIMA NURSERY
Part 13006 305 x 457 mm 3 lbs



12" x 18" MAXIMA SOW SLAT
Part 13008 305 x 457 mm 4 lbs

12" x 24" MAXIMA NURSERY
Part 13111 305 x 610 mm 4 lbs

12" x 24" MAXIMA SOW SLAT
Part 13010 305 x 610 mm 5 lbs

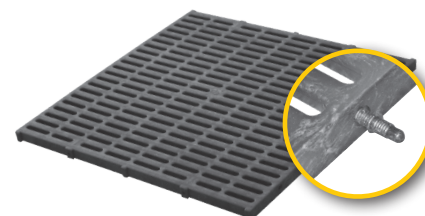


18" x 42" MAXIMA CREEP
Part 13042 457 x 1,067 mm 8 lbs

18" x 48" MAXIMA CREEP
Part 13048 457 x 1,219 mm 9 lbs



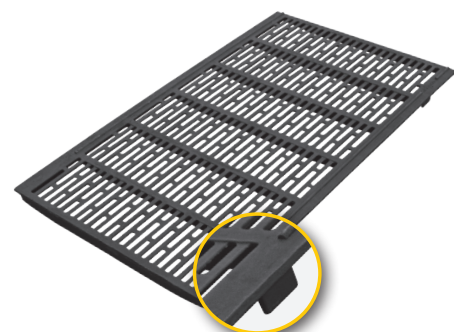
MADE IN USA



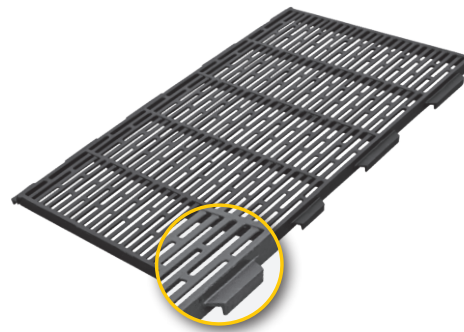
L3760 NURSERY SLAT -
24" x 24" x 1"
Part 13114 610 x 610 x 25 mm 6 lbs

FOUR LOCKING
PINS SUPPLIED
WITH EACH SLAT

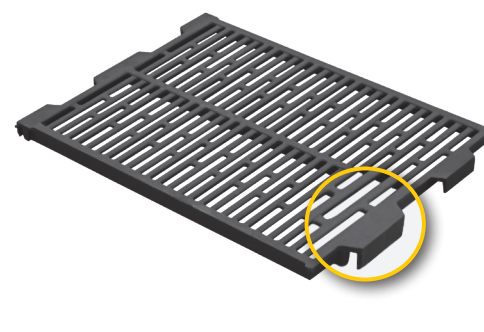
VALUCAST CAST IRON FLOORING



24" x 42" VALUCAST
Part 13575N 610 x 1,067 mm 64 lbs



24" x 42" RAISED INTERLOCKING
Part 13570 610 x 1,067 mm 62 lbs



24" x 18" FLAT INTERLOCKING
Part 13560N 610 x 457 mm 25 lbs

24" x 45" VALUCAST
Part 13550N 610 x 1,143 mm 68 lbs

24" x 48" RAISED INTERLOCKING
Part 13572 610 x 1,219 mm 70 lbs

24" x 48" VALUCAST
Part 13555 610 x 1,219 mm 72 lbs

24" x 24" FLAT INTERLOCKING
Part 13565N 610 x 610 mm 34 lbs

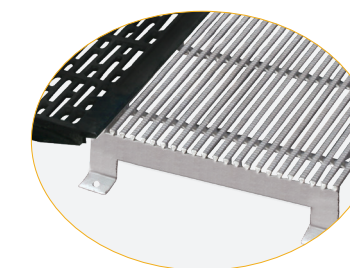
TRI-BAR/ FARROWING FLOOR

Updated Design



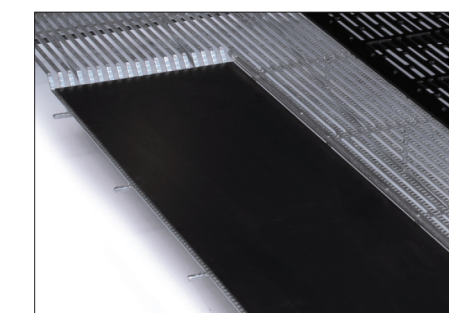
LOCK N LOAD
TOGETHER'S WINE

Custom Sizes
Available. Contact for
Part Number



Self-Supporting Floor

- Creep floor - easy to clean and very hygienic
- 50% opening in creep area. Steel is non-porous and thus does not harbor bacteria
- Corrosion-resistant, hot-dipped galvanized steel creep and frame
- Custom produced and delivered based on project needs
- Integrated support bars of 12mm thickness with flat bar
- Designed with a crimped non-slip profile
- Optimized spacing for manure management
- Prevents separation of cast with lock & Load Technology



Optional Recessed Creep Area
for Heat Mat



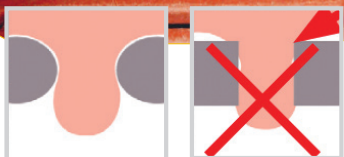
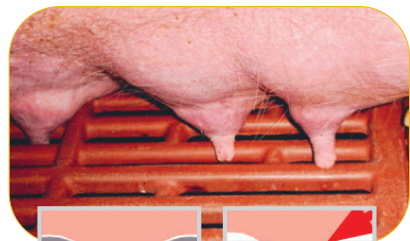
SCHONLAU: THE PREMIER CAST FLOOR

World's Best Cast Iron On The Market For Decades



SOW TOUGH,
TEAT TENDER

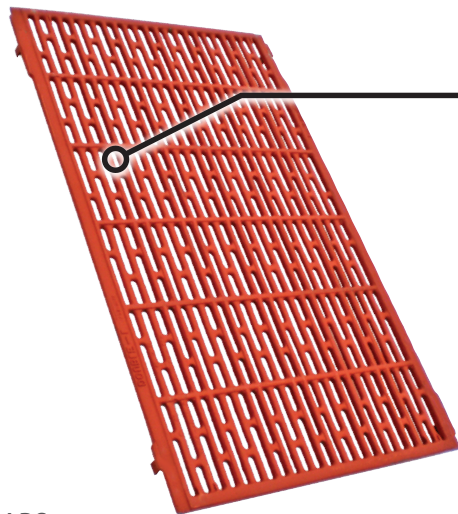
UNIQUE, ROUNDED BARS
PROTECT MILK BAR



NO SHARP EDGES
Roundly shaped ribs: no teat squeezing compared to rectangular 90 degree bars

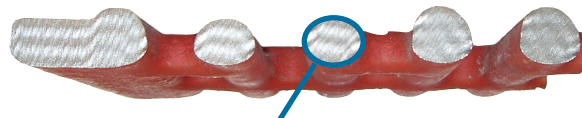


A farrowing floor that performs well helps improve the sow's potential and maximizes profits



Features high / low traction bars

Every 2 bars recessed 3.175 mm to add traction



Smooth and rounded bars mean no sharp edges, burrs, or corners to harm your sows



24" x 42" SCHONLAU CAST IRON

Red Part No. 13533 82 lbs (37 kg)

24" x 48" SCHONLAU CAST IRON

Red Part No. 13538 91 lbs (41 kg)

- 3/8" openings
- Rounded shaped bars with NO sharp edges safer for sows
- Crowned surface and high / low traction bars
- Non-porous, crowned surface easy to clean - no flashing
- Supports 2,083 lbs at any point
- ISO 9002 High Quality Standards

OPEN MOLD UNIQUE TO SCHONLAU



Made from an open mold process which results in a crowning effect, giving your herd the ultimate in traction and comfort



Schonlau cast iron's rounded corners and smooth surface allow manure to filter readily



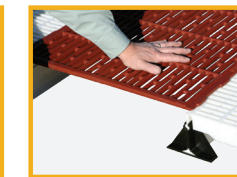
FARROWING FLOOR - SOW TOUGH, PIG TENDER

Protecting the Milk Bar and Reducing the Crush Factor

Protect your investment with Double L's combination flooring system Schonlau cast iron under the sow and Maxima polypropylene slats in the creep area. The cast iron is cool for the sow while it is uncomfortable for the little pigs so they are inclined to stay off of it and less likely to get crushed. Producers reported they save at least one pig per litter from a crush death, making the PS57 and the IVP57 Farrowing Floors very cost effective!



WARM
SURFACE FOR THE LITTLE PIGS

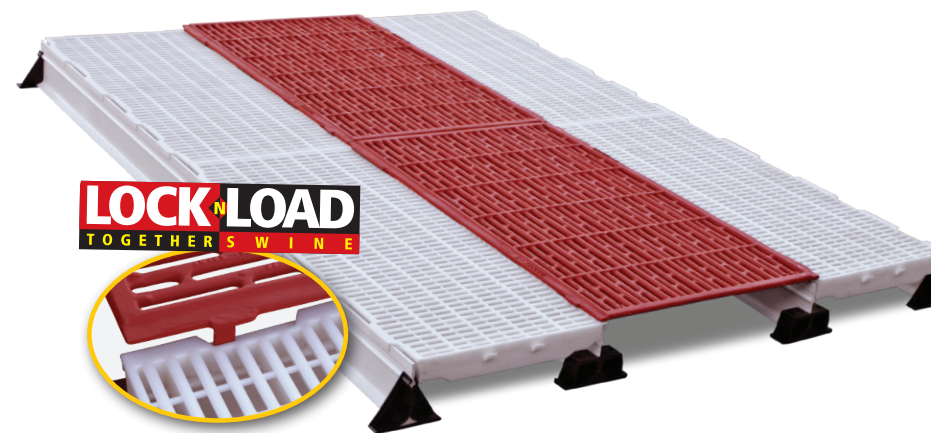


COOL
SURFACE FOR THE SOW

SCHONLAU & PLASTIC CREEP

- Lock-n-Load Assembly
- End Supports to promote beam stability
- 5" PermaBeams, Plastic Creep, and Schonlau Cast Iron: the strongest cast iron on the market

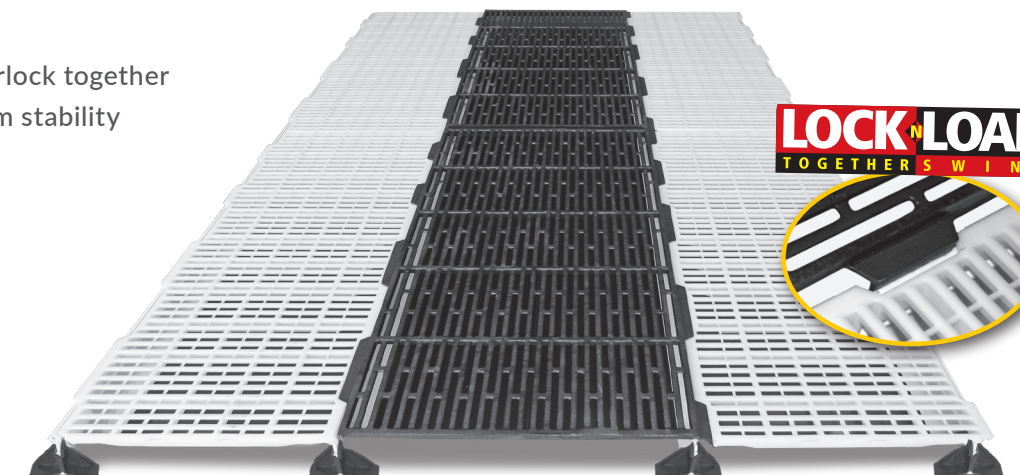
Available in 7 ft., 7 1/2 ft., and 8 ft. lengths



INTERLOCKING VALUCAST & PLASTIC CREEP

- Lock-n-Load Assembly
- Cast Iron and Creep Slats interlock together
- End Supports to promote beam stability
- Excellent wash-ability
- 5" PermaBeams

Available in 7 ft., 7 1/2 ft., and 8 ft. lengths

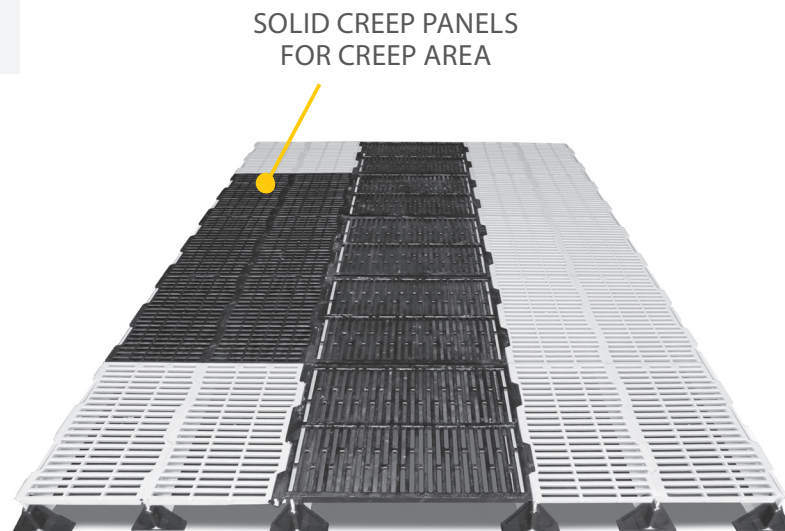




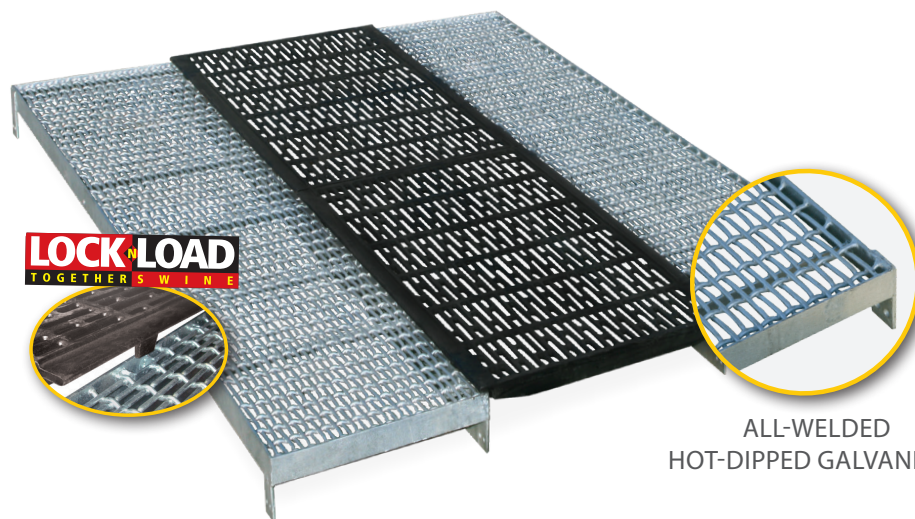
INTERLOCKING VALUCAST & PLASTIC CREEP

- Lock-n-Load Assembly
- Cast Iron and Creep Slats interlock
- End Supports promote beam stability
- Solid creep panels for creep area
- Excellent wash-ability
- 5" PermaBeams

Available in 7 ft., 7 1/2 ft., and 8 ft. lengths



SOLID CREEP PANELS FOR CREEP AREA



VALUCAST & ULTRA-SLAT STEEL

- Lock-n-Load Assembly
- 3-gauge woven wire
- Self-supporting
- Corrosion-resistant, hot-dipped galvanized steel creep and frame

ALL-WELDED HOT-DIPPED GALVANIZED



3/8" CAST IRON FARROWING FLOOR CLIP
Part 12317

Holds cast iron together, preventing it from separating. All stainless steel construction.



INTERIOR SLIDING WALL INLET

Actuated Wall Inlet for Retrofit or New Construction

4ft. x 24in.

Part 90906CH
6,400 cfm @ 0.1 SP
Rough Opening:
4ft. x 24in.

4ft. x 30in.

Part 90902CH
8,000 cfm @ 0.1 SP
Rough Opening:
4ft. x 30in.

4ft. x 48in.

Part 90908CH
12,800 cfm @ 0.1SP
Framed Opening:
4ft. x 48in.

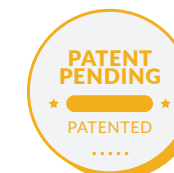
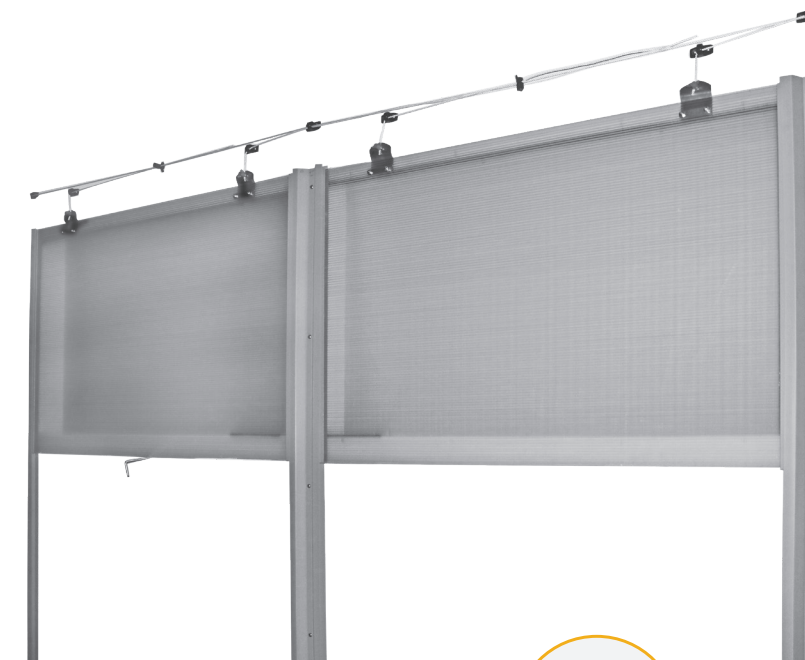
6ft. x 36in.

Part 90900CH
14,400 cfm @ 0.1SP
Rough Opening:
6ft. x 36in.

6ft. x 48in.

Part 90904CH
19,200 cfm @ 0.1SP
Rough Opening:
6ft. x 48in..

- Precision air control and greater air speed to enhance air quality
- R-Value = R3 from multiple vanes in panel
- Plastic construction is corrosion-resistant and power-wash friendly for easy maintenance
- Ridged construction allows for high durability and longevity
- Lightweight panels are easy for handling and installation
- Customizable for many installation configurations
- Great for replacing traditional gravity inlets to increase CFM requirements
- Clear panel allows for light to enter rooms and does not harbor bacteria and dust
- Low maintenance with high dependability



Need more CFMs? Upgrade counterweighted TJW Inlets to Actuated Sliding Wall Inlet



NEW
PRODUCT

EXTERIOR SLIDING WALL INLET

Actuated Wall Inlet for Retrofit or New Construction

Comes in 4 to 6ft.
lengths with heights
customizable



PATENT
PENDING
★ PATENTED ★

- Precision air control and greater air speed to enhance air quality
- R-Value = R3 from multiple vanes in panel
- Plastic construction is corrosion-resistant and power-wash friendly for easy maintenance
- Ridged construction allows for high durability and longevity
- Lightweight panels are easy for handling and installation
- Customizable for many installation configurations
- Great for replacing traditional gravity inlets to increase CFM requirements
- Clear panel allows for light to enter rooms and does not harbor bacteria and dust
- Low maintenance with high dependability
- Aluminum Channels

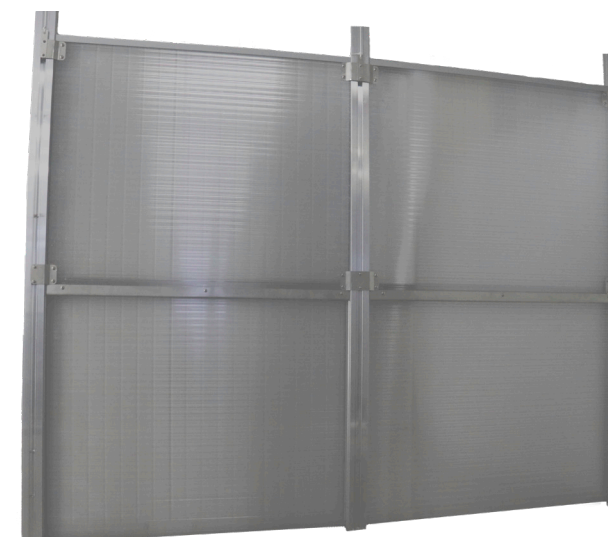


NEW
PRODUCT

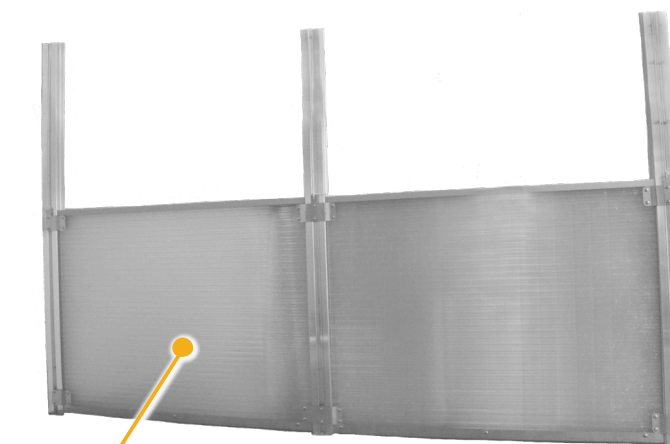
TELESCOPING SLIDING WALL INLET

Actuated Wall Inlet for Retrofit or New Construction

Comes in 4 to 6ft.
lengths with heights
customizable



PATENT
PENDING
★ PATENTED ★



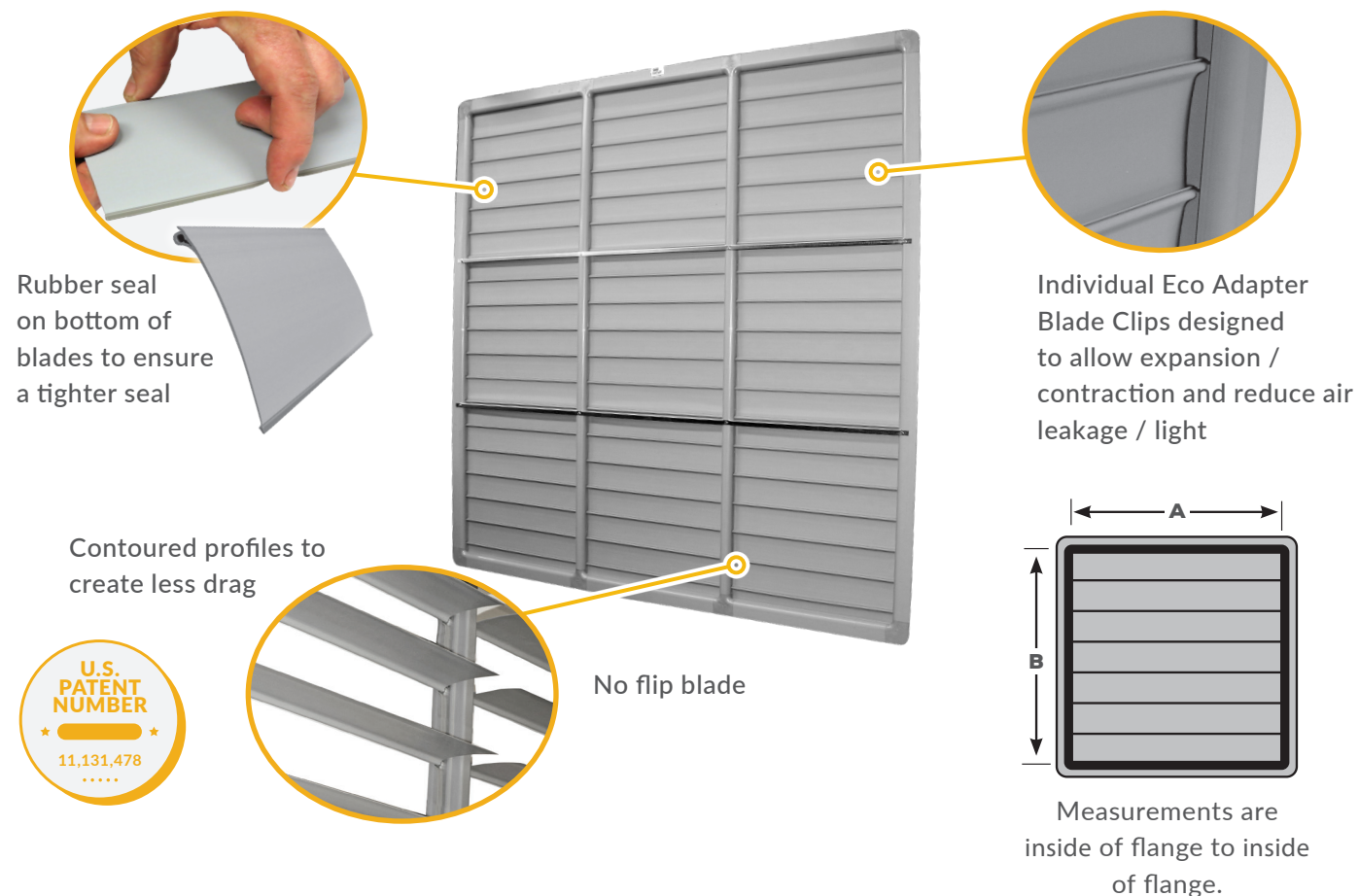
TELESCOPING
DESIGN

- Requires minimal drop space with telescoping design
- Available in multiple sizes and configurations to meet specific needs for both new barns and remodels
- Requires low maintenance with high dependability
- Designed with aluminum channels for durability and does not expand/contract
- R-Value = R3 from multiple vanes in panel
- Plastic construction is corrosion-resistant and power-wash friendly for easy maintenance
- Clear panel allows for light to enter rooms and does not harbor bacteria and dust
- Easily install with all materials needed in one sale



ECOTIGHT SHUTTER

Improves Fan Efficiency and Reduces Cold Air Leakage



SHUTTER FEATURES

- Manufactured to your desired custom size
- Heavy-duty, durable twin wall profile frame for longer life and stability of shutter
- Designed for expansion / contraction
- Aerodynamic design for maximum air performance and minimizing air leakage into room
- Built to retro fit any rough opening
- Continuous hinge for each blade prevents flip-over so blade is not stuck in open position
- Excellent clean-ability with durability to withstand pressure washing

CUSTOM BUILT IN DYERSVILLE, IOWA!

BESS LAB TESTED
Based on a 30" Shutter, the EcoTight Shutter had:
21.8% MORE AIRFLOW
17.1% LESS AIR LEAKAGE
than Double L's previous PVC Shutter

(Airflow Only - No Fan)
BESS Lab Tests: 16376 and 16377



MADE IN USA



SHUTTER ACCESSORIES

Simple and Effective Way to Winterize EcoTight Shutters or Other Manufacturer's Fan Shutters

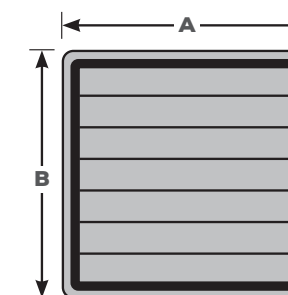
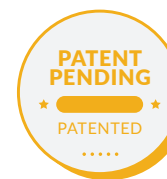


MADE IN USA

CUSTOM BUILT IN DYERSVILLE, IOWA!

SHUTTER COVER

- Panel stops cold air leakage and shutter flutter
- R-Value = R3 from multiple vanes in panel
- Improves energy usage
- Panel is easy to store and light to handle in summer months
- Flex tip U-Channel pre-installed on panel seals off from any water, dirt or air leakage
- Designed to work with Eco Tight Shutter and other fan shutters on the market
- Designed for expansion and contraction
- Manufactured to your custom sizes available.



Shutter Cover Measurements are outside of flange to outside of flange

CHORETIME 52" BUTTERFLY CONVERSION KIT

Shutter Conversion Kit Replaces Butterfly Shutter

Part No. 90520CK

- Shutter conversion kit can eliminate butterfly shutters.
- New EcoTight Shutter operates very quietly with minimal noise.
- No spring maintenance.
- EcoTight Shutter performance is minimally affected by the wind.





TOPJET GRAVITY WALL INLETS

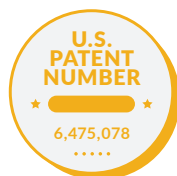
Translucent Inlets Direct Airflow Towards the Ceiling



Part 90519CH

Part 90540CH

Part 90521CH



- Translucent counterbalance louver blades allow more natural light into the room
- Adjustable counterweight for balancing multiple inlets, with ability to adjust for lower / higher static pressure
- TJW louvers open from the top instead of the bottom and are designed to direct airflow towards the ceiling area
- Engineered to open at .05 to .07 static pressure

TJW4312

Part 90519CH

13 lbs (5.9 kg)
2,200 cfm @ .125 SP
Framed Opening:
43.75" x 12.5" or
1,111.3 x 317.5 mm

TJW2923

Part 90540CH

18 lbs (8.2 kg)
3,000 cfm @ .125 SP
Framed Opening:
29.75" x 23.5" or
755.7 x 596.9 mm

TJW4323

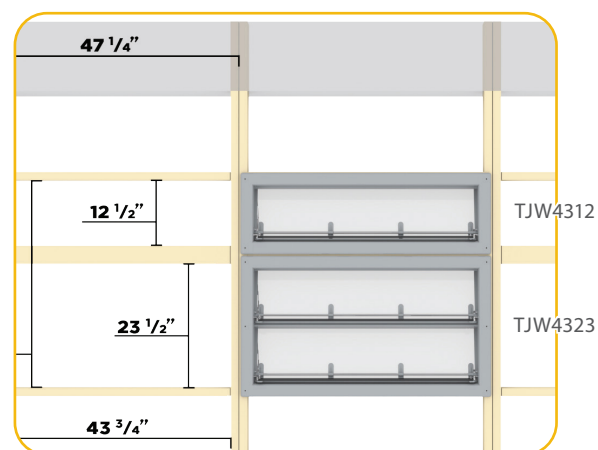
Part 90521CH

24 lbs (10.9 kg)
4,400 cfm @ .125 SP
Framed Opening:
43.75" x 23.5" or
1,111.3 x 596.9 mm

TJW4334

Comprised of TJW4312 & TJW4323

Part 90522
34 lbs (15.4 kg)
6,600 cfm @ .125 SP
Framed Opening:
43.75" x 39.5" or
1,111.3 x 1,003.3 mm



JWI WALL INLETS

Designed to Excel in Colder Weather



- Adjustable counterweight allows for fine control of air movement
- Negative pressure pulls back a frictionless styrofoam baffle to provide direct access of fresh air into your building
- Insulated hinged cover can be closed tight in cold temperatures or adjusted to any degree for proper air distribution
- Opens wide when plenty of air is needed; flow adjusts automatically to protect animals during cooler periods

JWI-1200

Part 90812

Approx. 1,000 cfm @ 0.05 SP

Framed Opening:
22" x 14" (558.8 x 355.6 mm)

JWI-2400

Part 90824

Approx. 2,400 cfm @ 0.05 SP

Framed Opening:
45.5" x 14" (1,155.7 x 355.6 mm)

W400 GRAVITY WALL AIR INLET

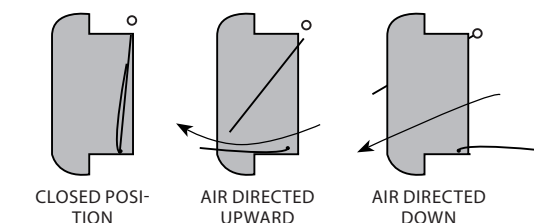
VERSATILE ALL-SEASON INLET



Part 90499

1.6 lbs (0.73 kg)
490 cfm @ .125 SP

Rough Opening:
22.25" x 5.5" (565.2 x 139.7 mm)



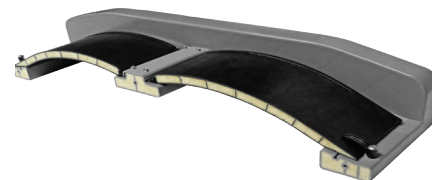
Offers air direction control through the use of its bottom deflector louver. The W400 can be mounted to control airflow through a wall by framing in an opening. The W400 inlet has a bottom deflector louver that is used to direct airflow and, if desired, to shut off the inlet.



DL INSULATED INLET SERIES

Most Efficient Air Mixing Inlet on the Market

- Customizable for your operation and can be single or double pulled
- Easily install inlet with all mounting hardware pre-installed to the inlets
- Fully constructed with virgin PVC for durability to withstand power-washing, but are also fully insulated to prevent condensation
- Square design promotes precision air movement during minimum ventilation and allows maximum cfm's to be achieved in full-open position
- Promotes increased velocity of air entering the room, resulting in better air distribution and mixing
- Rough opening designed to fit standard filter boxes in the industry



DL INLET CUTAWAY



DL3232

Part 90302P

Approx. 4,144 cfm @ 0.10 SP
(BESS LAB TEST 18564)
Framed Opening:
28" x 28" (711.2 x 711.2 mm)



DL4727

Part 90301

Approx. 4,750 cfm @ 0.10 SP
(BESS LAB TEST 19572)
Framed Opening:
44" x 24.75" (1,117.6 x 628.7 mm)



DL3127

Part 90300

Approx. 3,107 cfm @ 0.10 SP
(BESS LAB TEST 16694)
Framed Opening:
29" x 24.75" (736.6 x 628.7 mm)



DL1427

Part 90304

Approx. 1,153 cfm @ 0.10 SP
(BESS LAB TEST 21069)
Rough Opening: 24.75" x 11"

DL1927

Part 90306

Approx. 1,681 cfm @ 0.10 SP
(BESS LAB TEST 21090)
Rough Opening: 24.75" x 16"

2-WAY INSULATED CEILING INLETS

Withstand Harsh Environments and Cold Weather Conditions



**Part 90841
(Gravity)**

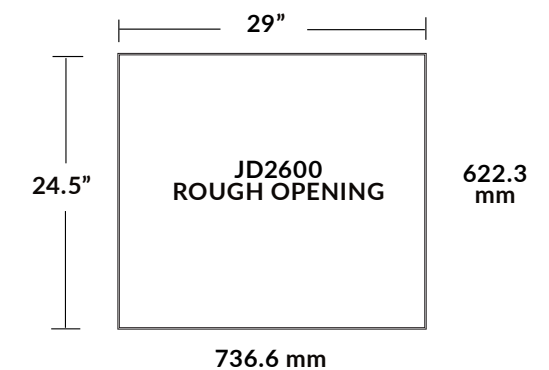
JD2600 Actuated OR Gravity

13 lbs (5.9 kg)
Approx. 2,400 cfm @ .05 SP
BESS Labs Test #05180

JFD2600 Foam Insulated Also Available



**Part 90840
(Actuated)**



Double L's 2-Way Insulated Attic Inlets are great for minimum to maximum ventilation for control of air movement, directing air along ceiling for proper air mixing. They are constructed of a single piece, insulated, corrosion resistant, rotomolded housing with 1" thick insulated lids to minimize condensation, dripping, and inlet

freeze-up. Frictionless styrofoam PVC covered lids on a continuous PVC hinge swing down to allow clean attic air into main room.

When lids are closed, inlet is sealed against air leakage. Withstands harsh environments and extreme cold weather conditions.



2-WAY INSULATED CEILING INLETS



JD2900 ACTUATED OR GRAVITY

Part 90837
(Actuated)

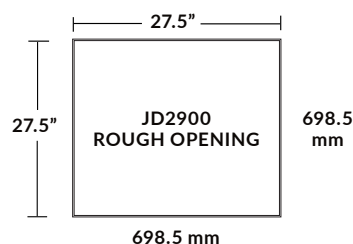
Approx. 2,490 cfm @ .05 static pressure

Rough Opening:
27.5" x 27.5" (698.5 x 698.5 mm)

Also available as single pull inlet



Part 90836
(Gravity)

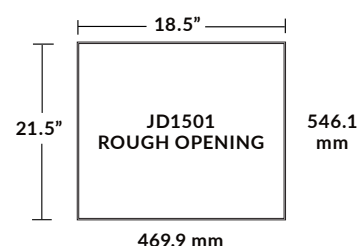


JD1501 ACTUATED OR GRAVITY

Approx. 1,300 cfm @ .05 static pressure

Rough Opening:
18.5" x 21.5" (469.9 x 546.1 mm)

Also available as single pull inlet
BESS Labs Test #05095



Part 90827
(Actuated)



Part 90825
(Gravity)



RAYDOT INSULATED REPLACEMENT INLETS

Easily Replace Outdated Raydot Inlets

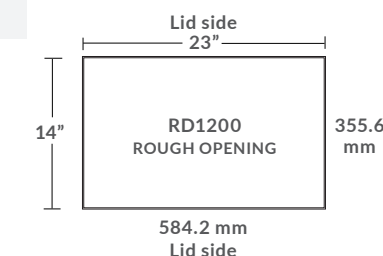


RD1200 & RD2400 ACTUATED

RD1200 ACTUATED

Part No. 90810

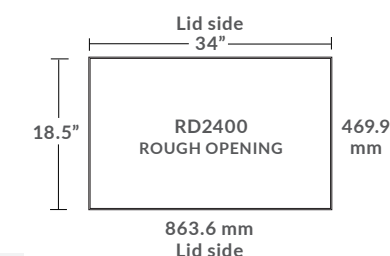
CFM: Approx. 1,200
Rough Opening: 23" x 14"
(BESS LAB TEST 19571)



RD2400 ACTUATED

Part No. 90814

CFM: Approx. 2,400
Rough Opening: 34" x 18.5"
(BESS LAB TEST 19570)



RD1200 & RD2400 GRAVITY

RD1200 GRAVITY

Part No. 90809

CFM: Approx. 1,200
Rough Opening: 23" x 14"
(BESS LAB TEST 19571)

RD2400 GRAVITY

Part No. 90813

CFM: Approx. 2,400
Rough Opening: 34" x 18.5"
(BESS LAB TEST 19570)

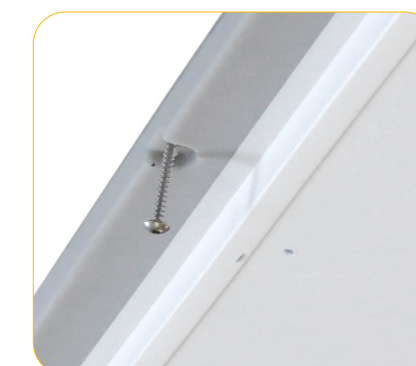
Attic Sleeve
Sold Separately
Attic Sleeve Parts:
RD1200 - 090836BE
RD2400 - 090835BE



2-stage shut-off to protect from
wind pressure



Actuating RD1200 inlet



Inlet lids have tight seal
to reduce air leakage



2-WAY FULLY INSULATED INLETS

Great Retrofit for Small Rough Openings



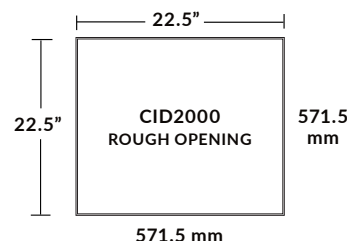
Part 90847
(Gravity)

CID2000 GRAVITY

CFM: Approx. 2,000 @ 0.05 SP
Rough Opening: 22.5" x 22.5"



Replaces C2200 Inlets



Part 90847WI
(Actuated)

JFD2000 ACTUATED

CFM: Approx. 2,000 @ 0.05 SP
Rough Opening: 22.5" x 22.5"

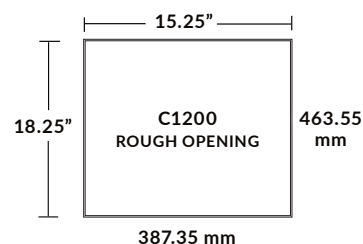
REPLACE OR UPDATE YOUR C1200 INLETS



Part 90535
(Gravity)

C1200 GRAVITY

CFM: Approx. 1,200
Rough Opening: 15.25" x 18.25"



C1200 INLET REPLACEMENT PARTS

Part No. 90531	14.5" Counterbalance with pins
Part No. 90532	17.5" Counterbalance with pins
Part No. 90533	C1200 Bounce Plate
Part No. 90004FR	C1200 Frame Only



360° INSULATED INLETS

Improved GC1140 and AC3010 with super tough structural foam for added strength and insulation value



GC1140 (Gravity)

Part 90678

1,500 cfm @ 0.08 static pressure
2,046 cfm @ 0.15 static pressure

Rough Opening: 23.75" x 23.75"
BESS Labs Test #14005

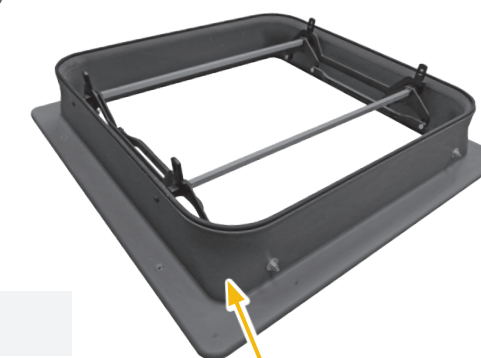


AC3010 (Actuated)

Part 90671

1,800 cfm @ 0.08 static pressure
2,518 cfm @ 0.15 static pressure

Rough Opening: 23.75" x 23.75"
BESS Labs Test #14006



**RADIUS CORNERS
FOR 360° AIRFLOW
WITH NO DEAD SPOTS**
Air doesn't hit square
corners and deflect
back into inlet

- 360° airflow heavy-duty radius corner design increases fuel savings, air distribution, and air mixing
- Designed for cold climates - fully insulated housing helps reduce heat loss and freeze-up
- Tightest seal on the market - minimal leakage when attic inlet is in the closed position
- Larger bottom board than competition helps direct air along ceiling, resulting in minimal downdraft
- Easy to remove and reattach bottom lid with attachable straps - no bolts or screws to take off
- Housing made of four point pivot reactive injection molding (RIM)



ATTIC INLETS



Part 90635

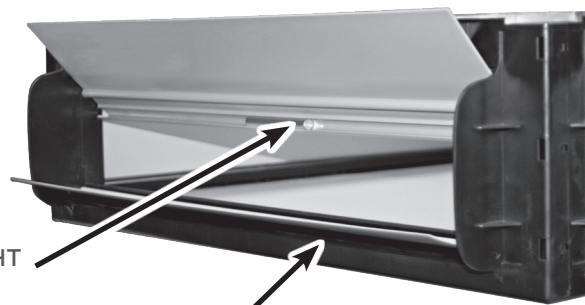
C2200 Attic Inlet

2,089 cfm @ .125 SP
(BESS LAB TEST 08146)

Framed Opening:
22.5" x 22.5" (571.5 x 571.5 mm)

BESS Lab tests prove that the C2200 Inlet allows 20% more cfm through the inlet than a C2000.

The extra cfm per inlet allows the customer to use fewer inlets per room. Counterbalance louvers adjust automatically to static pressure and each inlet can be shut off for better air control.



COUNTERBALANCE COUNTERWEIGHT
allows maximum cfm through inlet

AERODYNAMIC EDGE
prevents blade from being blown back during pressure washing



MADE IN USA



Part 90640

TJ4200 TopJet Ceiling Air Inlet

ENGINEERED TO ALLOW HIGHER STATIC
PRESSURE IN ROOMS

Approx. 1,812 cfm @ 0.125 SP
Gravity Inlet Only
Rough Opening:
22.5" x 22.5" (571.5 x 571.5 mm)

- Designed with counterbalance Louvers providing uniform air distribution
- Features jet technology that significantly increases speed and distance air travels across the ceiling
- Wire shut off maintains higher ventilation rates during winter without sacrificing temperature or wasting fuel
- Operates at a higher static pressure
- Snap together design allows you to easily install within minutes and no tools required



MADE IN USA



CORNER AND CEILING MOUNT DUCTWORK

Baffle Board Replacement Designed for New or Existing Buildings



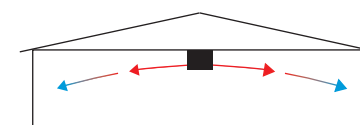
Part 90994B

8' CEILING DUCTWORK

22 lbs (10 kg)
12" x 8" x 8' sections
304.8 mm x 203.2 mm x 2.4 m

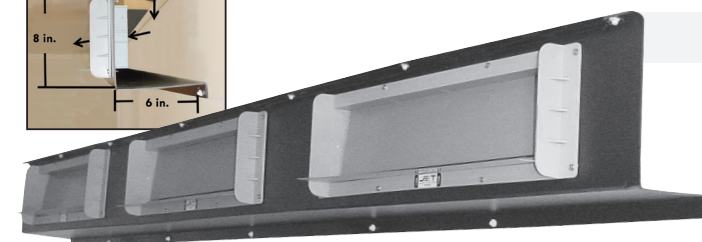
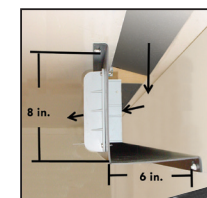


MADE IN USA



CEILING MOUNT POLYSTYRENE DUCTWORK WITH W400 INLETS

The Ceiling Mount Ductwork allows for two-directional air delivery from a center slot in the ceiling. The air supply is from the attic or pre-heated hallway. Eight foot sections accommodate up to six W400 inlets - three per side to deliver high volumes of air. Easily adapts as a replacement for continuous baffle. End caps and splices available.



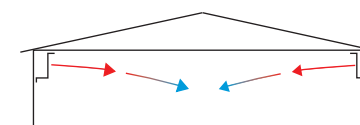
Part 90997B

8' CORNER DUCTWORK

13 lbs (5.9 kg)
6" x 8" x 8' sections
152.4 mm x 203.2 mm x 2.4 m



MADE IN USA



CORNER MOUNT POLYSTYRENE DUCTWORK WITH W400 INLETS

The Corner Mount Ductwork is excellent when used to pull air out of the attic. The eight foot sections accommodate up to three W400 inlets. Corner Mount Ductwork easily adapts as a replacement for continuous baffle. End caps and splices are available.



4872 WELCOME MAT

Reduce Pig Stress, Keep Pigs Dry, and Help Prevent Feed Waste



4' x 6' WEAN-TO-FINISH PIG MAT

Part No. 16459
 Dimensions 4' x 6' (1.2 x 1.8 m)
 Thickness 0.115" (2.9 mm)

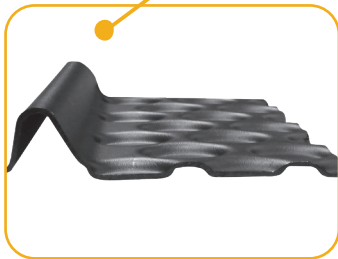


MADE IN USA

GREAT FOR CREEP FEEDING AND REDUCING FEED WASTE

- Accomodates 50 pigs
- Improves pig's comfort, environment, health, and productivity by keeping nursery pigs warm and dry while avoiding diseases.
- Unique design allows nursery pig to lay on elevated surface, helping to insulate little pigs from cold weather draft and the cold concrete slats.
- Easily pressure washed clean for increased bio security.
- Simple to transport and store on a shelf or wall.
- Reduces feed waste with deep oval indentations and a raised feed lip

1-1/4" RAISED FEED LIP



PIG MAT SAVES 36% OF PIG'S HEAT LOSS

Thermal Comfort for Little Pigs in Cold Wean-to-Finish Barn

Tests conducted by Double L show that producers using the 4' x 6' Wean-to-Finish Pig Welcome Mat can use 36% less energy to maintain the pig's body temperature (105°F) versus a pig lying on a concrete floor.

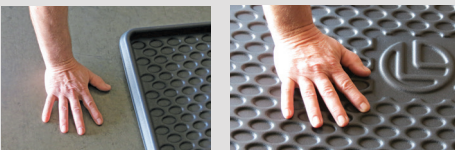
Two boxes, 12" x 12" x 12" high, were made using 1 1/2" thick insulation board, leaving the top and bottom of the box open. Lined with 3 mil plastic and filled with water, two identical heating probes were used to heat the water to 105°F. One box was placed on a concrete floor and the other box was placed on the 4' x 6' Welcome Mat on a

concrete floor. When temperature of water reached 105°F, the usage of kilowatts to maintain temperature in two boxes was documented during the winter months.

In a 17-hour span, the box on the plastic mat used 1.15 Kwh while box directly on the concrete used 1.8 Kwh. Results showed that a pig lying on the 4' x 6' Wean-to-Finish Mat used 36% less energy to maintain its body temperature (105°F) when compared to a pig lying on the concrete floor.



CONCRETE FLOOR VS. WARM, DRY PIG MAT



ALL-SEASON ROTOMOLDED CURTAIN POCKETS

Seal Curtain Edges and Protect Curtain from Wind Damage



FRONT VIEW

BACK VIEW



MADE IN USA

- Versatile, all-season curtain pockets designed with special UV stabilizers to eliminate plastic degradation in sunlight
- Seal curtain edges and protect curtain from wind damage
- Rotomolded of non-corrosive polyethylene, providing added strength and durability
- Install in minutes with just a handful of screws
- Tapered from 2" at the top to 6" at the bottom of the curtain pocket

PCP1866

Part 16495
 18" x 66"H (457.2 x 1,676.4 mm)
 21 lbs / pr. (9.5 kg)

PCP1878

Part 16494
 18" x 78"H (457.2 x 1,981.2 mm)
 22 lbs / pr. (10.0 kg)

PCP1884

Part 16498
 18" x 84"H (457.2 x 2,133.6 mm)
 23 lbs / pr. (10.4 kg)

FAST RESPONDING THERMOSTATS

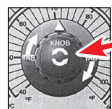
Weather proof NEMA 4x enclosure is resistant to high humidity, airborne contaminants, and most corrosive conditions. Temperatures range from 40° to 104° F.

TH415

SINGLE STAGE THERMOSTAT

Part #50165

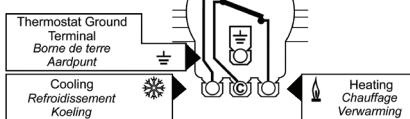
- Heating and cooling
- Fast responding stainless steel sensor resists corrosion
- 2.5 degree differential
- Simple calibration in field



Adjustable Knob Allows for Recalibration

Volts AC 50/60 Hz	120	240
Full Load Amps.	12	10
Lock Rotor Amps.	48	36
Non Inductive	16	16
Resistive Load Amps.		
Pilot Duty-125VA.	120/240 VAC.	

WIRING DIAGRAM:
 Schéma de branchement:
 Aansluitingschema:

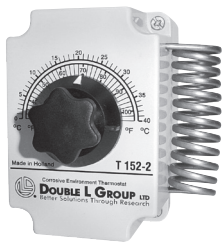


T152-2

TWO-SPEED THERMOSTAT

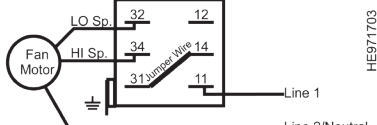
Part #50167

- Designed to use with fans that have lo/hi speed built-in
- 316 stainless steel sensor for quick response
- Large easy to read knob
- Easy calibration.



Two-Speed Thermostat	Volts AC 50/60 Hz	120	240
Raintight Enclosure	Full Load Amps.	12	10
Use Copper Conductors Only	Lock Rotor Amps.	48	36
	Non Inductive	16	16
	Resistive Load Amps.		
	Pilot Duty-125VA.	120/240 VAC.	

Wiring Diagram:

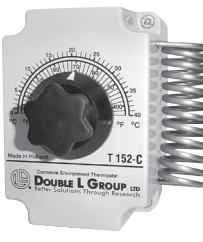


T152-C

CURTAIN CONTROLLER THERMOSTAT

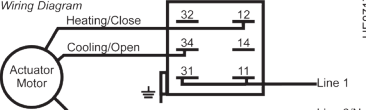
Part #50168

- Designed to control curtain-inlet actuators on temp
- 316 stainless steel sensor for quick response
- Large easy to read knob
- Easy calibration
- Simply tie the power supply to the T152-C



Volts AC 50/60 Hz	120	240
Full Load Amps.	12	10
Lock Rotor Amps.	48	36
Non Inductive	16	16
Resistive Load Amps.		
Pilot Duty-125VA.	120/240 VAC.	

Type T-152-C
 Curtain Controller
 Raintight Enclosure
 Use Copper Conductors Only





PVC CREEP DIVIDERS EASY TO INSTALL

Durable and Warmer Than Metal



PVC Divider
Part 12837 for 37"
or 12890 for 90"

- Offered in 37" or 90" wide sizes
- 7/8" thickness
- Easy to install and clean
- Lightweight



2-Way Post
Part 12560-14



U-Channel
Part 12560-20

30" X 36" TWO-WAY SORTING PANEL

Bio-secure - No Seams to Split Open



Part 16460
30" x 36" (762 x 914.4 mm)
14 lbs (6.4 kg)

- HDPE solid Plastic - No Place for Germs
- Molded into one solid piece with no seams to split open, leaving no place for germs to hide



Will flex slightly with applied weight of nearly 200 lbs (90.7kg), but it will not break



Blow-molded hollow panels harbor germs and provide hiding place for bacteria and rodents

4" POLY FEED HOPPER

Tapered Sides and Front to Minimize Feed Loss



Part 16454
14"L x 6.5"W x 13.25"H
Tapered Side: 12" (304.8 mm)

- Easy to hand feed sows
- Easily assembled on feed tube
- Made of rotomolded polyethylene
- Holds up to 20 lbs (9.1 kg)
- Durable and easy to clean
- Tapered front helps minimize feed loss



STF1415 HDPE SOW FEEDER



Part 16450
14"Wx15"H (355.6mm x 381mm)

STAINLESS STEEL
LIP PROTECTOR

- Reduces feed waste with rounded corners / bottom
- Decreases feed build up and bacteria
- Corrosion resistant and power wash friendly
- Reinforced at feeder rod locations to reduce wear

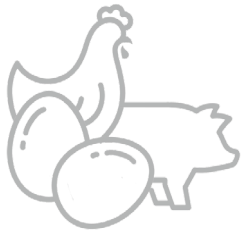


Molded mounting foot sits on lower bar of front gate holding feeder in place

Eliminates the following cost nightmares caused by stainless steel sow feeders:

- Bent feeders
- Separated seams corners and holes to reinforce
- Thin steel to weld





LAYER DIVISION

- Attic, Wall and Ceiling Inlets
- Hoods / Wind Deflectors
- PVC Shutters
- 1/5 HP Stir Fans
- Thermostats
- Winches
- Cool Cell System
- Rack & Pinion
- Pop Out Doors

SWINE DIVISION

- Attic and Wall Inlets
- Ductwork
- PVC Shutters
- Flooring
- Pig Mat
- Curtain Pockets
- Thermostats
- Accessories
- Winches

POULTRY DIVISION

- Attic, Wall and Ceiling Inlets
- Tunnel Doors
- Hoods / Wind Deflectors
- PVC Shutters
- 1/5 HP Stir Fans
- Linear Actuator
- Thermostats
- Flooring
- Winches

Since 1973, Double L has committed to providing high-quality products and services worldwide that are based on value, customer's needs, and excellent sales support.

Double L Group, LLC strives to provide our distributors and customers with innovative products that offer the best return on investment.

CONTACT DOUBLE L FOR:

- High Quality Materials and Products
- Quality Design for Compact Shipping
- BESS Lab Testing of Ventilation Products
- Exceptional Service on all Products
- Informative Website with Informational Product Videos

2020 Beltline Road | PO Box 324 | Dyersville, Iowa 52040-0324
800-553-4102 | 563-875-6257 | sales@doublel.com | www.doublel.com



Disclaimer of warranties and limitation of remedies: the manufacturer of these products provides a limited warranty and Double L Group LLC will provide further information relating to the manufacturer's warranty upon request. Subject to that manufacturer warranty, for which the manufacturer and not Double L Group LLC is solely liable, these products are offered by Double L Group LLC as is, with all faults and without any representations by Double L Group LLC as to quality, performance or suitability. Double L Group LLC specifically disclaims any and all warranties, express or implied, including without limitation all warranties of merchantability or fitness for a particular purpose. Under no circumstances shall Double L Group LLC or any of its employees, directors, officers or agents be liable, in tort, contract or otherwise, for any direct or indirect losses or damages in any way arising from or related to any product purchased, including without limitation the condition or performance of the product, whether such damages are general, special, consequential, incidental, economic, exemplary or otherwise. This includes but is not limited to damage or injuries to person, property, or animals, business interruption or other economic loss. This disclaimer of liability shall apply even if an authorized representative of Double L Group LLC has been advised of or should have known of the possibilities of such damages.