



# Models TJP1255 & TJP1265 Gravity Controlled Wall Air Inlets

## S P E C I F I C A T I O N S

TJP poultry inlets feature patented counterbalanced louvers that open from the TOP instead of the bottom. Air is directed towards the peak of the house, utilizing the heat collected at the peak. Eliminates curtain and baffle pulley and cable management required with traditional winter inlet-systems. Wind deflector suggested.

- Opens at higher static pressures of .055 and .065

WALL AIR INLET US Patent No. 6,475,078

Model TJP1255 opens at .055 static pressure  
UPC 90740

Model TJP1265 opens at .065 static pressure  
UPC 90741

### DIMENSIONS

Width: 24 1/2"

Height: 9"

Depth: 3 1/2"

Flange width: 1 1/2"

### TOOLS & MATERIALS REQUIRED

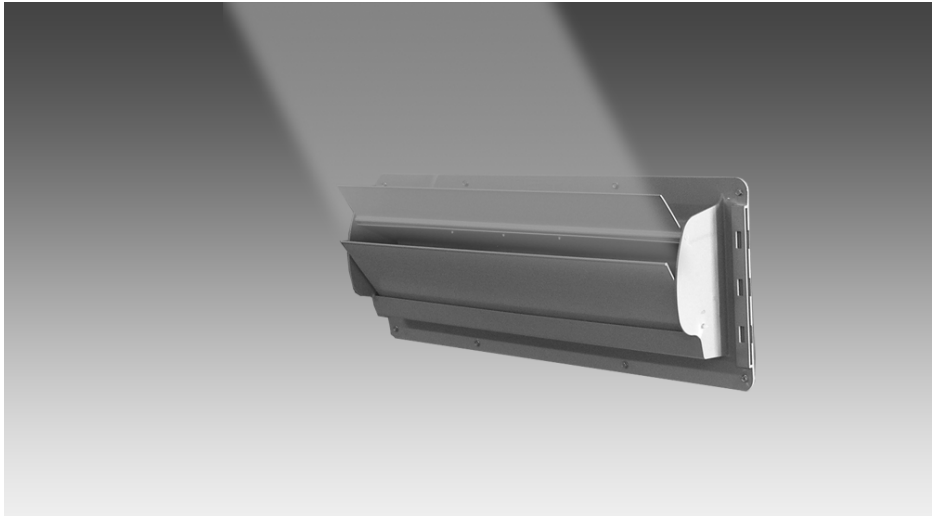
Screw gun

Caulk for sealing frame

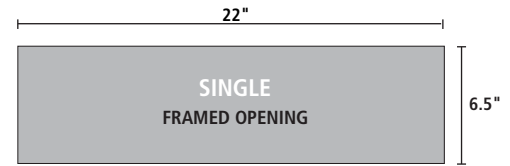
Mounting screws

### IMPORTANT

A good seal is required to maintain proper static pressure and operation.



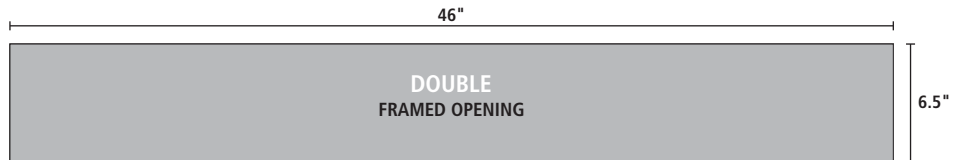
TJP1255



SINGLE  
FRAMED OPENING



Two TJP1255 snapped together



DOUBLE  
FRAMED OPENING



*The WD48 Wind Deflector mounts over the exterior vent openings to block direct wind and keep inlets operating at their optimum. It is highly suggested that it be used with the TJP poultry inlets.*

### Model WD48 Wind Deflector

#### DIMENSIONS

Width: 48" flange to flange

Height: 8"

Depth: 4"

Flange width: 1"

Distributed by



DOUBLE L GROUP LTD

Box 324, 2020 Beltline Rd, Dyersville, IA 52040-0324 toll-free 800-553-4102 ph 563-875-6257 fx 563-875-6258 email jzitterg@doublel.com web www.doublel.com

DISCLAIMER OF WARRANTIES AND LIMITATION OF REMEDIES: DOUBLE L GROUP, LTD. DISCLAIMS ANY AND ALL WARRANTIES, EXPRESS OR IMPLIED, INCLUDING, WITHOUT LIMITATION, WARRANTIES OF MERCHANTABILITY OR FITNESS FOR A PARTICULAR PURPOSE. UNDER NO CIRCUMSTANCES, SHALL DOUBLE L GROUP, LTD. OR ANY OF ITS EMPLOYEES, DIRECTORS, OFFICERS, OR AGENTS, BE LIABLE FOR ANY DIRECT OR INDIRECT LOSSES OR DAMAGES ARISING FROM OR RELATED TO ANY PRODUCT PURCHASED, WHETHER SUCH DAMAGES ARE GENERAL, SPECIAL, CONSEQUENTIAL, INCIDENTAL, ECONOMIC, EXEMPLARY OR OTHERWISE (INCLUDING BUT NOT LIMITED TO DAMAGE OR INJURIES TO PERSONS, PROPERTY, OR ANIMALS), WHETHER IN TORT OR CONTRACT, EVEN IF AN AUTHORIZED REPRESENTATIVE OF DOUBLE L GROUP, LTD. HAS BEEN ADVISED OF OR SHOULD HAVE KNOWN OF THE POSSIBILITY OF SUCH DAMAGES.