

INSTRUCTIONS

Framed Opening
22.5" x 22.5"

Tools & Materials Needed
Screw gun
Inlet mounting screws
Caulk for sealing inlet

4' on center truss

1 - 2 x 6 - 10' long lumber per inlet

5' on center truss

1 - 2 x 6 - 12' long lumber per inlet

TROUBLESHOOTING

INLET NOT OPENING

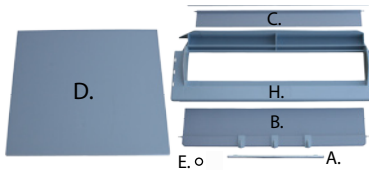
- 1) Too tight. Counterbalance needs to be checked for movement side to side. Make sure pivot pins are pushed in all the way.
- 2) Insulation or debris fallen into bottom of inlet - feel inside inlet bottom and remove dirt buildup.



To disassemble the inlet to replace parts, press a screwdriver into the rounded slots. Inlet sides will unsnap.

Contents:

- 2 - Box Attic Sleeves
- 8 - TJ4200 Frame Assembly
- 8 - Zinc Counterweight Rods
- 2 - Insulation Boards



TJ4200 Parts List:

- A. 100154RD - 3/8" Zinc Wire Firm Rod
- B. 90507 - Counterbalance Louver w/ Rod Holder
- C. 90504 - 21 5/16" (62 mm) Deflector
- D. 900093F0 - Poly Foam Board
- E. 900013WA - O-ring
- F. 900026ST - Pivot Pins
- G. 900028ST - Plastic Nails
- H. 90511 - TJ4200 Frame Assembly



DOUBLE L GROUP™

TJ4200 U.S. Patent No. 6,475,078

WARNING! READ BEFORE BEGINNING INSTALLATION

Double L Group Ltd will not be responsible for improperly installed inlets or for the consequences of improperly installed inlets.

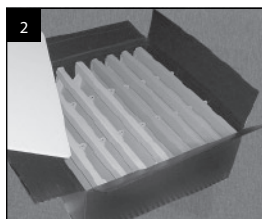
Do not overtighten inlet to framed rough opening.

Caulk around framed opening and inlet housing to ensure a good seal. A good seal is required to maintain proper static pressure and operation.

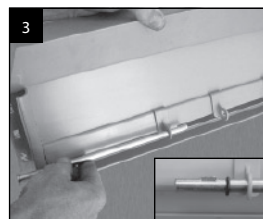
INSTALLATION INSTRUCTIONS



TJ4200 arrives packed in its own attic sleeve! Do not damage the box, it will be used later in the installation process.



The shipping package contains two corrugated plastic attic sleeves, eight inlet sections, eight counterweight rods and two insulated boards.



Insert counterweight rods into inlet rod retainer holes before snapping sides together. Put o-rings on the end of rod.



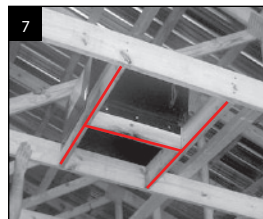
The assembly of the TJ4200 is simple and requires no tools. Just snap together!



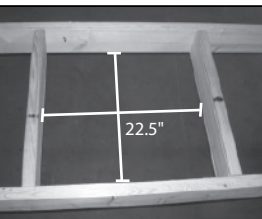
Begin by snapping three inlet sides together, then insert the insulation board in the bottom channel. Snap the fourth side into place to complete the TJ4200 inlet.



Separate the two boxes to be used for attic sleeves.



Add 2 x 6 to frame for inlet opening. One truss is used for inlet opening.



Finished frame opening of 22.5" x 22.5"



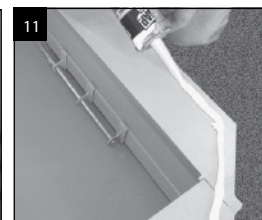
Install attic sleeve over outside of lumber framing the opening (with larger flaps of box down) may need to cut out part of box corner.



Be sure the insulation surrounds the wood frame.



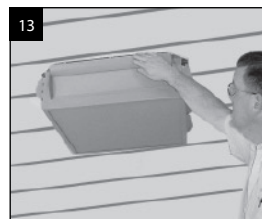
Do not cut plastic strips holding up ceiling. Cut an X in plastic ceiling and tack flaps against the inside frame.



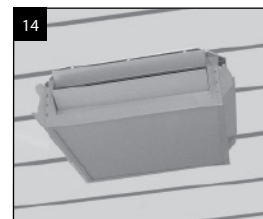
Inlet and frame will require caulking. Inspect and caulk gaps where the inlet meets the frame and where the frame meets the ceiling. (Bin caulk works well)



Center inlet over opening and screw into place. Be careful not to overtighten screws.



Adjust directional louver so that it is parallel to the floor on all four sides.



Your TJ4200's are ready to go to work!

Important: Check operation of all four counterbalances. They must swing freely without binding.

NOTE: Periodically clean louvers for dust buildup.

NOTE: For growers who choose to change the static pressure from .05 to .07 can add 5/8" nut to each rod on inlet.

PO Box 324, 2020 Beltline Road, Dyersville, Iowa 52040-0324 toll-free 800-553-4102 ph 563-875-6257 fx 563-875-6258 e-mail jzitterg@doublel.com web www.doublel.com

DISCLAIMER OF WARRANTIES AND LIMITATION OF REMEDIES: DOUBLE L GROUP, LTD. DISCLAIMS ANY AND ALL WARRANTIES, EXPRESS OR IMPLIED, INCLUDING, WITHOUT LIMITATION, WARRANTIES OF MERCHANTABILITY OR FITNESS FOR A PARTICULAR PURPOSE. UNDER NO CIRCUMSTANCES, SHALL DOUBLE L GROUP, LTD. OR ANY OF ITS EMPLOYEES, DIRECTORS, OFFICERS, OR AGENTS, BE LIABLE FOR ANY DIRECT OR INDIRECT LOSSES OR DAMAGES ARISING FROM OR RELATED TO ANY PRODUCT PURCHASED, WHETHER SUCH DAMAGES ARE GENERAL, SPECIAL, CONSEQUENTIAL, INCIDENTAL, ECONOMIC, EXEMPLARY OR OTHERWISE (INCLUDING BUT NOT LIMITED TO DAMAGE OR INJURIES TO PERSONS, PROPERTY, OR ANIMALS). WHETHER IN TORT OR CONTRACT, EVEN IF AN AUTHORIZED REPRESENTATIVE OF DOUBLE L GROUP, LTD. HAS BEEN ADVISED OF OR SHOULD HAVE KNOWN OF THE POSSIBILITY OF SUCH DAMAGES.