



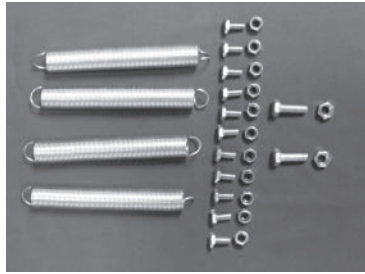
# The Grazer



Weights approx. 68.2 lbs. • Model #GT00299  
Dimensions: 31"L x 14"W x 28"H

## Includes:

- 4 springs
- 12 bolts - 10mm x 25mm long
- 12 lock nuts - 10mm
- 2 bolts - 12mm x 30 long
- 2 standard nuts - 12mm
- 2 side panels
- 1 front panel
- 1 back panel
- 1 perforated bottom plate
- 1 feed trough grate



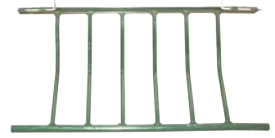
Side Panel



Front and Back Panel



Perforated Bottom Panel



Feed Trough Grate

## Grazer Installation Instructions:



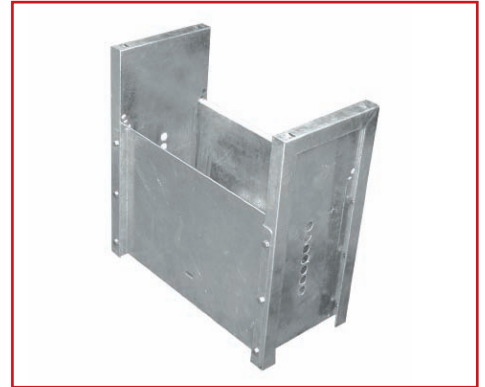
### Step 1

Fasten loosely, front panel to side panel with three 10mm bolts and lock nuts.



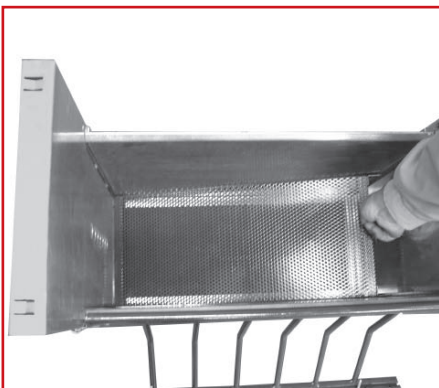
### Step 2

Fasten loosely, back panel to side panel with three 10mm bolts and lock nuts.



### Step 3

Fasten second side to front and back panels with the 6 remaining 10mm bolts and lock nuts.



### Step 4

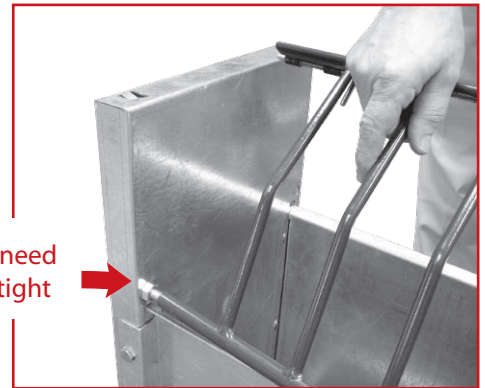
Place perforated bottom plate into slots at the bottom of grazer.



### Step 5

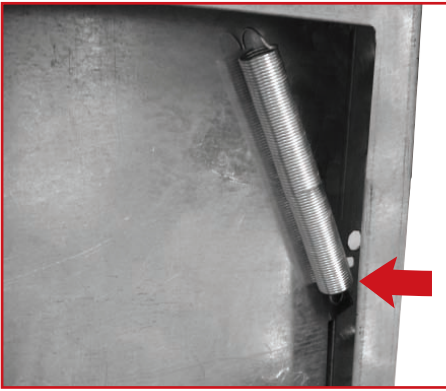
Fasten 12mm bolt and nut through side panel hole just above back panel. Repeat on second side panel.

These nuts need to be very tight



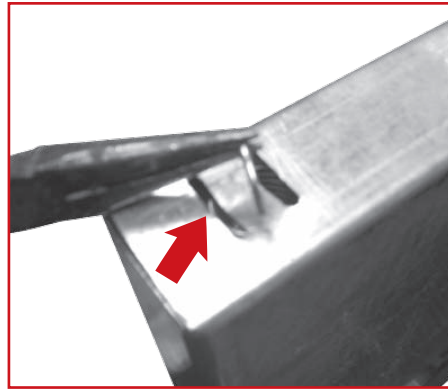
### Step 6

Slip end of feed trough grate onto bolt. Repeat on second side panel and tighten all bolts previously fastened.



### Step 7

Hook spring through the perforated bottom plate on the inside of the end panel.



### Step 8

Pull the end of spring up into side panel hole and loop through the lower hole.



Finished Grazer.



# The Grazer

Corner Assembly Kit includes:

2 Grazer Corners

8 Self Tapping Screws

Drill needed for assembly



Finished Grazer with corners.



### Step 1

Start by placing the corner over front outer edge of The Grazer.



### Step 2

Next, press corner into place and secure, using the provided self tapping screws.



### Step 3

Continue to secure corners into The Grazer using the eight screws provided. (4 per corner)



**DOUBLE L GROUP** LTD

Visit [www.doublel.com/haygrazer.html](http://www.doublel.com/haygrazer.html)  
for The Grazer mounting instructions

PO Box 324, 2020 Beltline Road, Dyersville, Iowa 52040-0324 toll-free 800-553-4102 ph 563-875-6257 fx 563-875-6258 e-mail [klewis@doublel.com](mailto:klewis@doublel.com) web [www.doublel.com](http://www.doublel.com)

DISCLAIMER OF WARRANTIES AND LIMITATION OF REMEDIES: DOUBLE L GROUP, LTD. DISCLAIMS ANY AND ALL WARRANTIES, EXPRESS OR IMPLIED, INCLUDING, WITHOUT LIMITATION, WARRANTIES OF MERCHANTABILITY OR FITNESS FOR A PARTICULAR PURPOSE. UNDER NO CIRCUMSTANCES, SHALL DOUBLE L GROUP, LTD. OR ANY OF ITS EMPLOYEES, DIRECTORS, OFFICERS, OR AGENTS, BE LIABLE FOR ANY DIRECT OR INDIRECT LOSSES OR DAMAGES ARISING FROM OR RELATED TO ANY PRODUCT PURCHASED, WHETHER SUCH DAMAGES ARE GENERAL, SPECIAL, CONSEQUENTIAL, INCIDENTAL, ECONOMIC, EXEMPLARY OR OTHERWISE (INCLUDING BUT NOT LIMITED TO DAMAGE OR INJURIES TO PERSONS, PROPERTY, OR ANIMALS). WHETHER IN TORT OR CONTRACT, EVEN IF AN AUTHORIZED REPRESENTATIVE OF DOUBLE L GROUP, LTD. HAS BEEN ADVISED OF OR SHOULD HAVE KNOWN OF THE POSSIBILITY OF SUCH DAMAGES.