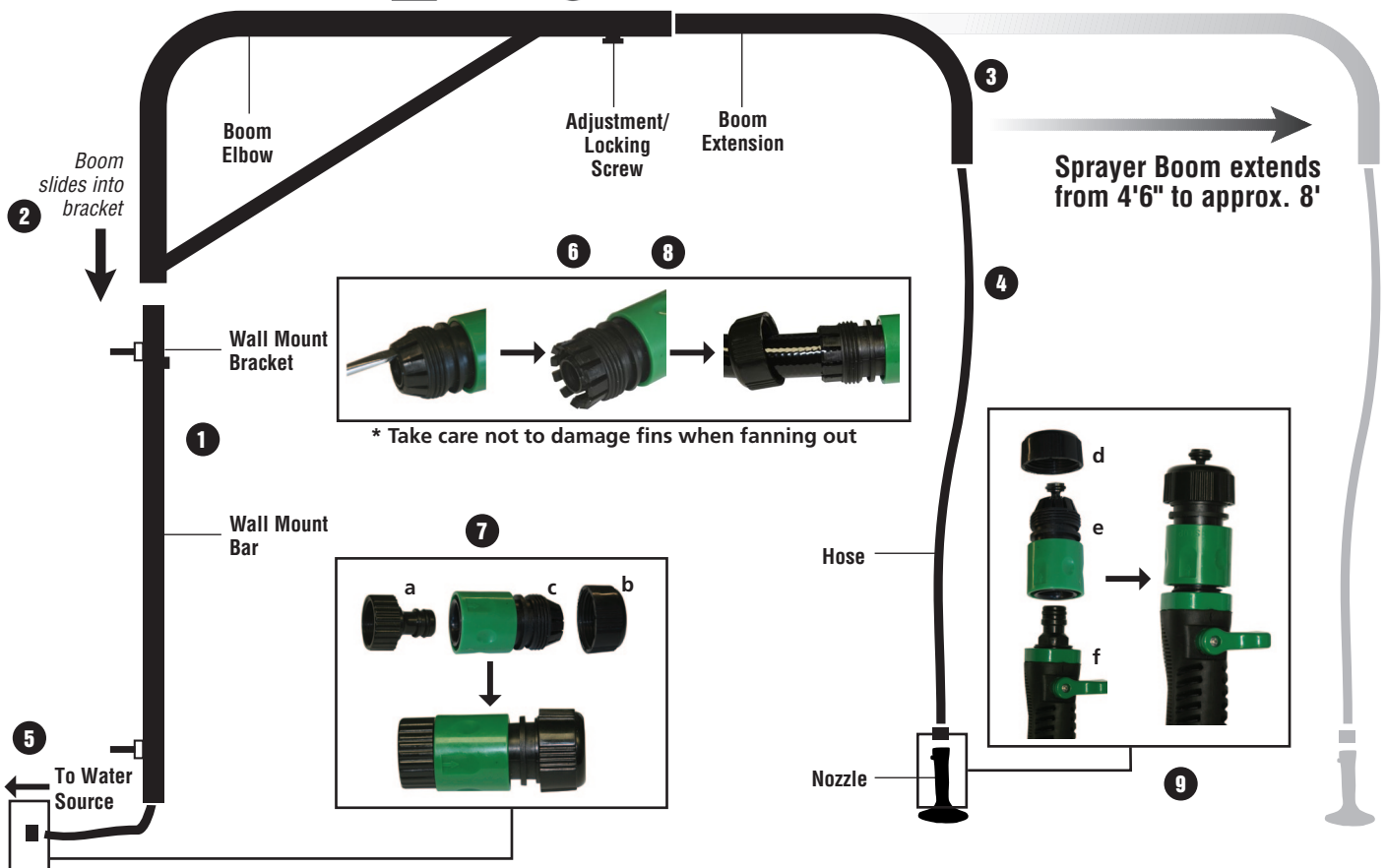
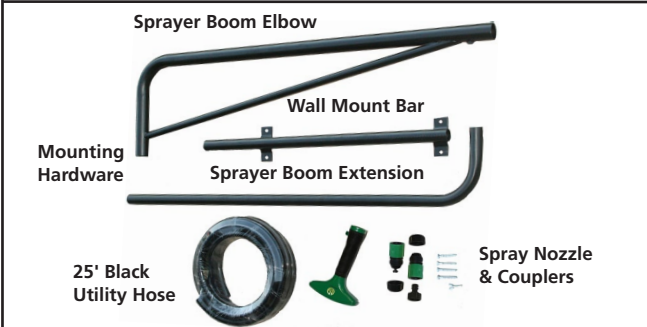


Stableline

Sprayer Boom



- Step 1** Attach wall mount bar to post or wall at desired height using the four 3/8" x 1 1/4" lag bolts.
- Step 2** Slide sprayer boom elbow over wall mount bar until it rests securely on the top wall mount bracket.
- Step 3** Slide boom extension into sprayer boom elbow to desired length. Secure with adjustment/locking screw.
- Step 4** Insert hose into boom extension through boom elbow and down wall mounting bar to water source.
- Step 5** Screw female garden hose end (a) onto faucet or water spout.
- Step 6** Slide retaining nut (b) over hose end. Using a screwdriver, fan hose coupler(c) fins out to allow hose to be inserted into opening.
- Step 7** With hose inserted in place, tighten retaining nut (b) onto coupler(c). To connect, push hose coupler(c) onto garden hose end (a) connected to water source.
- Step 8** To connect other end of hose to spray nozzle, slide retaining nut (d) over hose end. Fan spray nozzle coupler (e) fins out to allow hose to be inserted into opening.
- Step 9** Tighten retaining nut (d) onto coupler (e). To connect, push spray nozzle coupler (e) onto spray nozzle (f).
- Step 10** To disconnect either coupler, pull green in direction of printed arrow.



Caution: As with any hosing, the animal must become accustomed to the environment and the hosing gradually. With the Sprayer Boom there will be some movement above the animal's head that may be new.

Sprayer Boom Box Includes:
 Sprayer Boom, wall mount bar with bracket, mounting hardware, 25' black utility hose, spray nozzle, hose coupler, spray nozzle coupler



DOUBLE L GROUP™

2020 Beltline Road, Box 324
 Dyersville, IA 52040-0324

www.doublel.com

800-553-4102

DISCLAIMER OF WARRANTIES AND LIMITATION OF REMEDIES: DOUBLE L GROUP, LTD. DISCLAIMS ANY AND ALL WARRANTIES, EXPRESS OR IMPLIED, INCLUDING, WITHOUT LIMITATION, WARRANTIES OF MERCHANTABILITY OR FITNESS FOR A PARTICULAR PURPOSE. UNDER NO CIRCUMSTANCES, SHALL DOUBLE L GROUP, LTD. OR ANY OF ITS EMPLOYEES, DIRECTORS, OFFICERS, OR AGENTS, BE LIABLE FOR ANY DIRECT OR INDIRECT LOSSES OR DAMAGES ARISING FROM OR RELATED TO ANY PRODUCT PURCHASED, WHETHER SUCH DAMAGES ARE GENERAL, SPECIAL, CONSEQUENTIAL, INCIDENTAL, ECONOMIC, EXEMPLARY OR OTHERWISE (INCLUDING BUT NOT LIMITED TO DAMAGE OR INJURIES TO PERSONS, PROPERTY, OR ANIMALS), WHETHER IN TORT OR CONTRACT, EVEN IF AN AUTHORIZED REPRESENTATIVE OF DOUBLE L GROUP, LTD. HAS BEEN ADVISED OF OR SHOULD HAVE KNOWN OF THE POSSIBILITY OF SUCH DAMAGES.